



TEAM FOOTBALL

2025 Catalogue
Switzerland / English



INDEX

<u>01.</u>	P.03	LIFECYCLE
<u>02.</u>	P.04	INTRODUCTION
<u>03.</u>	P.07	INNOVATION
<u>04.</u>	P.11	MATCHDAY
<u>05.</u>	P.75	GOALKEEPER

<u>06.</u>	P.89	TRAINING
<u>07.</u>	P.196	LIFESTYLE
<u>08.</u>	P.220	EQUIPMENT
<u>09.</u>	P.253	REFEREE



LIFECYCLE

INDEX



WEEKEND WARRIORS.

Greatness isn't just reserved for the spotlight and doesn't rely on the roar of thousands. It lives on the muddy pitches, in the early morning kick-offs, and under grey skies. It's friends showing up—no matter the odds, no matter the weather—because for them, football is way more than just a game.

This is for those who bring energy every week, who play not for glory but for their mates. For the undying love of the sport and the fellowship it creates. For those whose legs may give out but whose spirit never will. Every run, every laugh, every moment shared with your team.

The goalie, the ball boy, everyone that reminds us what football is about. We see you, Weekend Warrior. You are the player that fuels Nike Team Football.



MOVE TO ZERO



Move to Zero is Nike’s journey towards zero carbon and zero waste, helping to protect the future of sport. We all share the responsibility for our playground—Planet Earth.

That’s why we’re reimagining things from top to bottom through sustainability and circularity. We’re focusing on carbon, waste, water, and chemistry, aiming to hit targets by 2025.

Our purpose is to move the world forward through the power of sport. Worldwide, we’re levelling the playing field, doing our part to protect our collective playground and expanding access to sports for everyone.



THREADS THAT MATTER.

Recycled Polyester

Our recycled polyester is made from plastic bottles which are cleaned, shredded into flakes, converted into pellets, and then spun into a high-quality yarn. Recycled poly lowers carbon emissions by up to 30% compared to virgin poly, and diverts an average of 1 billion plastic bottles annually from landfills and waterways.

Sustainable Cotton

As of 2020, 100% of the cotton we use across our entire product line is certified organic, recycled, or Better Cotton sourced through the Better Cotton Initiative (BCI). BCI works to improve cotton farming globally, sourcing cotton through a system of Mass Balance. All of our organic cotton is grown without fossil fuel derived pesticides or synthetic fertilisers and we also recycle more than 1.5 million pounds of cotton each year.

Recycled Nylon

Our recycled nylon is transformed from various materials, like carpets and used fish nets. The nylon is cleaned, sorted, and converted into flakes, all before undergoing a chemical or mechanical recycling process. The new recycled nylon yarn reduces our carbon emissions by up to 50% compared to virgin nylon.

We’re creating new ways to advance a circular vision and protect the future of sport. This means designing your favourite footwear, apparel and accessories to last longer and giving those products and their materials new life when it’s time. Nike is working to create an integrated end-to-end process to resell, donate and recycle finished product waste based on its condition and business rules, extending a product’s life while ensuring it flows to its highest use. Our desired state will maximise refurbishment, donation, and recycling to avoid landfills and waste.

Nike has pushed the boundaries of sustainable innovation for decades. But what got us here won’t get us where we need to go. At Nike’s scale, we’re evolving the playbook, transforming science fiction to science fact. We’re not there yet, but we know where we’re going—moving to zero and beyond. We think of it as “Bloom Over Doom”—tenacious optimism, audacious innovation and collective action so we all, and this beautiful blue ball, thrive.



Sunburst symbol

Did you know? The “Sunburst” symbol was created in the 1970s as a circular option where the asymmetry of the Swoosh logo didn’t work. Since then, in the exact nature of our circular design philosophy, we’ve repurposed the logo. Today, when you see this logo, you see one small step in our journey to Move to Zero.



As a grassroots player, obstacles are inevitable. Whether it's rain or unforgiving fields, you crush them yourself. Nike ensures your kit will never be a barrier.

Our gear gives you the freedom to tackle challenges head-on.



INNOVATION



GO AHEAD. SWEAT.

NIKE FIT

In 1991, Nike launched Functional Innovative Technologies that revolutionised the athletic apparel industry by keeping you cool, warm and dry, protecting you from wind, rain or the frostiest weather. Materials have been engineered to deliver exactly what you need to combat the elements. Thirty years in, the proprietary system continues to lead the sports industry—and it's paved the way for Nike's latest breakthrough apparel evolutions.

From your training gear to your matchday kit, FIT is engineered for athletes everywhere with apparel that ensures you feel good, look good and show up at your best.



DRI-FIT

It's an unavoidable fact of life: humans sweat. But even your sweatiest moments won't stand a chance against Nike's moisture-wicking technology. Tough training, the heat of the match, or a long session in the sun can leave your top damp against your skin. Sweat is the body's way of cooling itself, but once sweat soaks through fibres like cotton, it slowly evaporates, which may make you too chilly. That's where a moisture-wicking jersey comes in handy—it dries quickly, allowing maximum comfort.

The Dri-FIT fabric absorbs sweat and wicks it away from your body. It helps keep you cool in the sun and warm when it's cool out, making it a great choice all year round. Each moisture-wicking jersey is soft to the touch and designed using technical expertise that allows for ultimate breathability as you go. Dri-FIT gear is best worn alone or as a base layer. Direct contact with your body helps keep you drier for longer. Dri-FIT's sweat-wicking properties last as long as you wear your jersey. So go ahead—sweat.



FREEDOM IN EVERY MOVEMENT



FIT ADV

Breathable and lightweight kits give you the freedom to move agile. NextGen VaporKnit with Dri_FIT ADV technology lets you play with zero distractions. Its datadriven design fuses mesh in high-heat zones for lightweight breathability and precise sweat-wicking when and where you need it most. The high-stretch, anticling material frees you for quick, agile movements with a streamlined fit.

Build on the visual of Nike Football launched in 2024 with the new VaporKnit jerseys and shorts as seen on Federation kits for Euro 24 and Copa 24. This design can be seen on the official kits of the national federations participating in the tournaments.



**FIT ADV means
FIT Advanced.
The absolute best
that Nike has to offer.**

FIT ADV takes the superior materials and rigorous testing protocol of FIT, but levels the system with the most in-depth athlete insights and sport science research; the latest in digital design, such as body-mapped engineering; and innovative construction and functional design features tailored to your movement. This allows you to focus on your team, not the elements.

If a garment is tailored to keep you dry and cool, Nike designers will focus on specific areas, informed by meticulous lab testing, where we know you will experience significant sweat and heat during movement. The insights are based on significant testing in the Nike Sport Research Lab, now the new state-of-the-art LeBron James Innovation Center, one of the largest sports research labs in the world. There, Nike designers can collect massive amounts of athlete insights—how much a player sweats and where what parts of the body are most vulnerable to wind and cold—and collate it all into digital computational designs. This means designers can engineer a material pixel by pixel to cool, warm, or protect you exactly where you need it most on your body.

**FOCUS ON YOUR TEAM
NOT THE ELEMENTS**



Football is community and culture.
Every match strengthens the bond,
making the team stronger.

Win together.
lose together.
learn together.

MATCHDAY



MATCHDAY

<u>01.</u>	P.17	JERSEYS
<u>02.</u>	P.47	SHORTS
<u>03.</u>	P.57	SOCKS
<u>04.</u>	P.61	FIRST LAYERS



FOR WEEKEND WARRIORS



It's in the quiet minutes before the first whistle, when the field lies untouched, waiting for you to make it yours. Slowly, the early risers trickle in—shaking off the remnants of sleep while the coach, up since dawn, surveys the scene. Teammates exchange glances as the familiar match-day rhythm begins to unfold; this is the calm before the storm.

You lace your boots and pull your jersey over your head, a ritual that marks the shift from individual to team. The recognisable scent of the locker room, the sound of studs on the floor, and the snug fit of shin guards pressing against your legs set the stage for what's to come.

When the whistle finally blows, the start of a game reminds you what you trained for. Whether the day brings victory or defeat, what remains is the bond between teammates and the memories that make each match unforgettable.

Nike understands that match day isn't just about those 90 minutes. It's about the warm-ups, the pep talks, the friendships, the loss, or the celebration. Standing as one, caring as one, and playing as one. Creating lasting memories.



MATCHDAYS ARE SACRED



Once you step onto the club grounds, the rest of the world fades away. It's escapism—just you and your teammates, united by the rush of the game.

It's the shared moments that turn into stories you've been telling for years. The high of a goal or the low of your friend's questionable dance celebration. When someone's knocked down, there's always a hand to lift him up. Because you're a team, supporting each other through the peaks and the falls. Music spills from the locker room after the serious sound of reflection. It's what pushes you to become more and reminds you why you show up every week. They need you, and you need them. No matchday is complete without the team.



THE FUTURE IS FEMALE

Today's female footballers are heroes on the pitch. Did you know that you're part of a legacy that spans generations? Each game you play adds to a story where strength and spirit shine through every challenge.

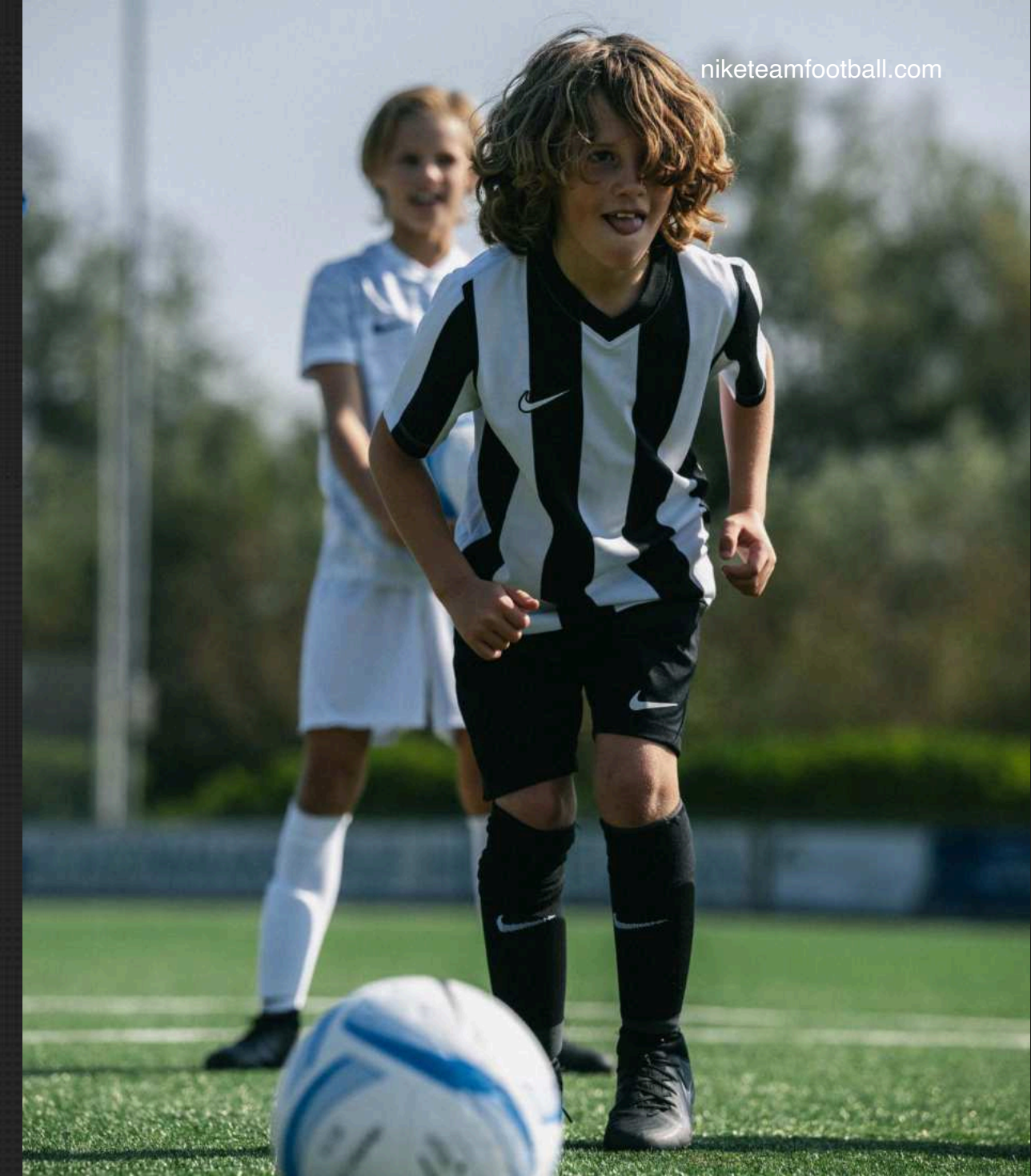
Sure, every tackle and goal may feel like a routine, but they reflect the joy and pride of countless women who paved the way before you.

Each match is your chance to showcase your talent and resilience, proving that the future of football is not just female: it's fierce and fun. So, embrace the game; it's a celebration of those who shaped this journey and an inspiration to the young girls who will carry the adventures forward.



ONE MATCH AT A TIME

There you are. In your kit, matching your teammates, ready to show what you've got. Parents, siblings, and friends stand along the sidelines, cheering and hyping you up. It's the moment where every pass and every sprint is a chance to get a little closer to the heroes you look up to.



It's the excitement of being part of something bigger than yourself. Where every match teaches something new and helps you grow. You learn to handle the ups and the downs—the joy of winning and the unpleasant sting of defeat. Bouncing back stronger after a

setback, and finding pride in every effort. What happens on the pitch shapes how you face challenges off it, instilling values that stay with you long after. This is where you make friends who will last a lifetime, bonded by the successes and struggles on the field.



JERSEYS

Your jersey is way more than just a shirt. The first time you wear it, it's a rush of new motivation. As the seasons pass, your jersey starts to tell a story — your story.

Every kick, every tackle, and every goal is etched into the fabric of your jersey, making it an extension of who you are as a player and as a teammate.

It bears witness to the hard work you put in at every practice, the laughter shared with teammates, the victories that light up your spirit, and the losses that teach resilience.

In the end, your jersey embodies your relentless commitment to football. Each stain, mark, and tear is proof of your passion, a testament to your dedication. It becomes your legacy—worn with pride, steeped in memories, and forever a part of the beautiful game.



FZ9271

Nike VaporKnit V Men's Dri-FIT ADV Football Jersey

Lifecycle

January 2025 - December 2026

Sizes

XS - 3XL

RRP 82 CH



FZ9271-011



FZ9271-101



FZ9271-463



FZ9271-657

Features

- Nike Dri-FIT ADV levels up our sweat-wicking technology with advanced cooling and zones of breathability to help athletes stay dry and comfortable.
- Slim fit for a tailored look and feel.
- Wt (g/m2): 170.00
- Machine wash
- Imported
- 100% polyester





FZ9327



Nike Strike IV Men's Dri-FIT Football Jersey

Lifecycle

January 2025 - December 2026

Sizes

Regular XS - 3XL | Tall S-T - 3XL-T

RRP 47 CH



FZ9327-010



FZ9327-011



FZ9327-101



FZ9327-410



FZ9327-463



FZ9327-657

Features

- Nike Dri-FIT technology moves sweat away from skin for quicker evaporation, helping athletes stay dry and comfortable.
- Slim fit for a tailored look and feel.
- Wt (g/m2): 140.00
- Machine wash
- Imported
- 100% polyester



FZ9329



Nike Strike IV Women's Dri-FIT Soccer Jersey

Lifecycle

January 2025 - December 2026

Sizes

Regular XS - 2XL | Tall XS-T - 2XL-T

RRP 47 CH



FZ9329-010



FZ9329-101



FZ9329-463

Features

- Nike Dri-FIT technology moves sweat away from skin for quicker evaporation, helping athletes stay dry and comfortable.
- New women's fit adds more space to the waist, allowing them to be at their best.
- Wt (g/m2): 140.00
- Machine wash
- Imported
- 100% polyester



FZ9331



Nike Strike IV Big Kids' Dri-FIT Football Jersey

Lifecycle

January 2025 - December 2026

Sizes

Regular XS - XL | Tall S-T - XL-T

RRP 42 CH



FZ9331-010



FZ9331-011



FZ9331-101



FZ9331-410



FZ9331-463



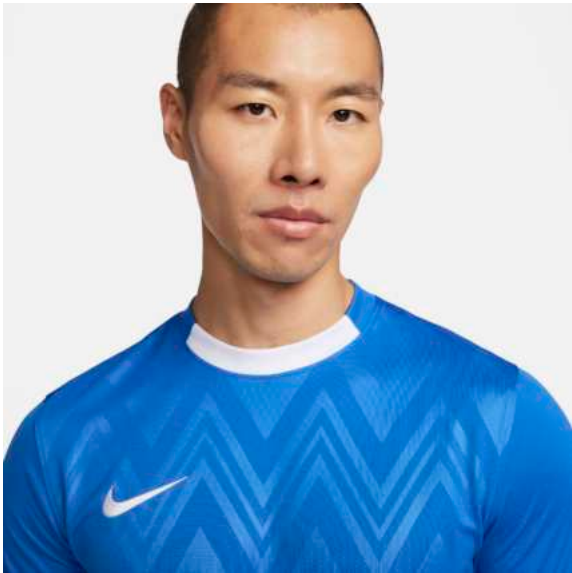
FZ9331-657

Features

- Nike Dri-FIT technology moves sweat away from skin for quicker evaporation, helping athletes stay dry and comfortable.
- Slim fit for a tailored look and feel.
- Wt (g/m2): 140.00
- Machine wash
- Imported
- 100% polyester



FD7412



Dri-Fit Challenge V Jersey

Lifecycle

January 2024 - December 2025

Sizes

XS - 3XL

RRP 45 CH



FD7412-010



FD7412-100



FD7412-463



FD7412-657

Features

- Nike Dri-FIT technology moves sweat away from your skin for quicker evaporation, helping you stay dry and comfortable.
- Slim fit for a tailored look and feel.
- 100% polyester





FD7420



Dri-Fit Women's Challenge V Jersey

Lifecycle

January 2024 - December 2025

Sizes

XS - 2XL

RRP 45 CH



FD7420-010



FD7420-100



FD7420-463



FD7420-657

Features

- Nike Dri-FIT technology moves sweat away from your skin for quicker evaporation, helping you stay dry and comfortable.
- New women's fit adds more space to the waist, allowing them to be at their best
- 100% polyester





FD7426



Dri-Fit Challenge V Jersey (Kids)

Lifecycle

January 2024 - December 2025

Sizes

XS - XL

RRP 40 CH



FD7426-010



FD7426-100



FD7426-463



FD7426-657

Features

- Nike Dri-FIT technology moves sweat away from your skin for quicker evaporation, helping you stay dry and comfortable.
- Slim fit for a tailored look and feel.
- 100% polyester





FZ9332



Nike Precision VII Men's Dri-FIT Football Jersey

Lifecycle

January 2025 - September 2025

Sizes

XS - 3XL

RRP 45 CH



FZ9332-010



FZ9332-100



FZ9332-410



FZ9332-463



FZ9332-657

Features

- Nike Dri-FIT technology moves sweat away from skin for quicker evaporation, helping athletes stay dry and comfortable.
- Print is placed randomly to optimize usage of material and reduce waste, resulting in subtle variations from kit to kit.
- Wt (g/m2): 140.00
- Machine wash
- Imported
- 100% polyester



FZ9336



Nike Precision VII Big Kids' Dri-FIT Football Jersey

Lifecycle

January 2025 - September 2025

Sizes

XS - XL

RRP 40 CH



FZ9336-010



FZ9336-100



FZ9336-410



FZ9336-463



FZ9336-657

Features

- Nike Dri-FIT technology moves sweat away from skin for quicker evaporation, helping athletes stay dry and comfortable.
- Print is placed randomly to optimize usage of material and reduce waste, resulting in subtle variations from kit to kit.
- Wt (g/m2): 140.00
- Machine wash
- Imported
- 100% polyester



DR0933



Dri-Fit Trophy V Jersey

Lifecycle

January 2023 - December 2025

Sizes

XS - 3XL

RRP 35 CH



DR0933-547



DR0933-410



DR0933-010



DR0933-354



DR0933-302



DR0933-657



DR0933-719



DR0933-052



DR0933-819



DR0933-100



DR0933-463

Features

- Nike Dri-FIT technology moves sweat away from your skin for quicker evaporation, helping you stay dry and comfortable
- Slim, streamlined fit to keep the air flowing and distractions low
- Breathable mesh teams with lightweight knit fabric
- Mesh back panel lets air flow to help keep you cool
- Ribbed inset at neck
- Embroidered Swoosh design
- Machine wash
- 100% Polyester





DR0942



Dri-Fit Trophy V Jersey (Youth)

Lifecycle

January 2023 - December 2025

Sizes

XS - XL

RRP 30 CH



DR0942-010



DR0942-463



DR0942-410



DR0942-354



DR0942-657



DR0942-052



DR0942-819



DR0942-719



DR0942-547



DR0942-302



DR0942-100

Features

- Nike Dri-FIT technology moves sweat away from your skin for quicker evaporation, helping you stay dry and comfortable
- Slim, streamlined fit to keep the air flowing and distractions low
- Breathable mesh teams with lightweight knit fabric
- Mesh back panel lets air flow to help keep you cool
- Ribbed inset at neck
- Embroidered Swoosh design
- Machine wash
- 100% Polyester



FZ9337



Nike Striped Division V Men's Dri-FIT Football Jersey

Lifecycle

January 2025 - December 2027

Sizes

XS - 3XL

RRP 40 CH



FZ9337-010



FZ9337-100



FZ9337-101



FZ9337-102



FZ9337-103



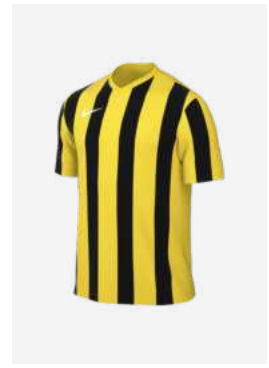
FZ9337-104



FZ9337-463



FZ9337-657



FZ9337-719

Features

- Nike Dri-FIT technology moves sweat away from skin for quicker evaporation, helping athletes stay dry and comfortable.
- Slim fit for a tailored look and feel.
- Wt (g/m2): 140.00
- 100% polyester



FZ9339



Dri-Fit Women's Striped Division V Jersey S/S

Lifecycle

January 2025 - December 2027

Sizes

2XS - 2XL

RRP 40 CH



FZ9339-010



FZ9339-100



FZ9339-101



FZ9339-102



FZ9339-103



FZ9339-104



FZ9339-463



FZ9339-657



FZ9339-719

Features

- Imported
- This product is made with 100% recycled polyester fibers



FZ9341



Nike Striped Division V Big Kids' Dri-FIT Football Jersey

Lifecycle

January 2025 - December 2027

Sizes

XS - XL

RRP 32 CH



FZ9341-010



FZ9341-100



FZ9341-101



FZ9341-102



FZ9341-103



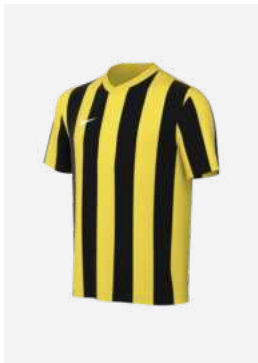
FZ9341-104



FZ9341-463



FZ9341-657



FZ9341-719

Features

- Nike Dri-FIT technology moves sweat away from skin for quicker evaporation, helping athletes stay dry and comfortable.
- Slim fit for a tailored look and feel.
- Wt (g/m2): 140.00
- Machine wash
- Imported
- 100% polyester



DH8031



Dri-Fit Academy Jersey S/S

Lifecycle

January 2022 - December 2025

Sizes

S - 2XL

RRP 32 CH



DH8031-010



DH8031-100



DH8031-102



DH8031-104



DH8031-302



DH8031-411



DH8031-463



DH8031-657



DH8031-719

Features

- Sweat-wicking fabric to help keep you cool during your pre-match or training routine.
- Dri-FIT technology helps you stay dry, comfortable & focused.
- Mesh back panel offers lightweight breathability.
- Slim fit for a tailored feel
- Machine wash
- 100% polyester





FZ4887



Dri-Fit Women's Academy Jersey

Lifecycle

January 2022 - December 2025

Sizes

XS - XL

RRP 32 CH



FZ4887-102



FZ4887-104



FZ4887-463



FZ4887-010



FZ4887-657



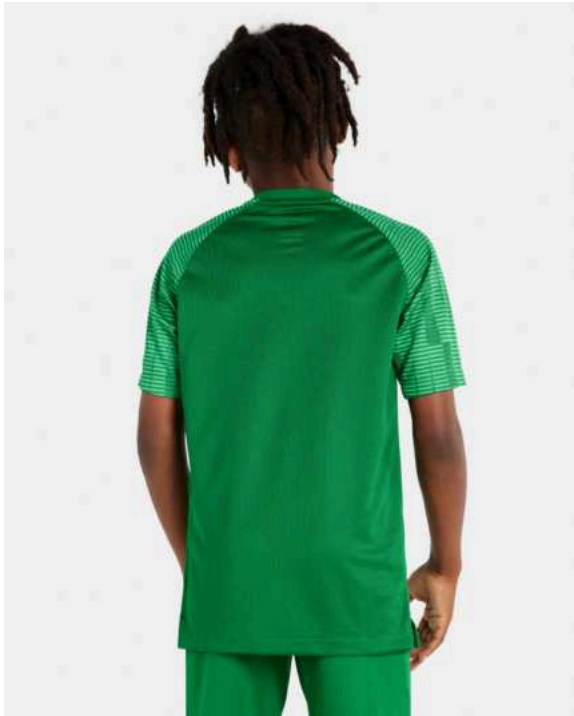
FZ4887-464

Features

- Sweat-wicking fabric to help keep you cool during your pre-match or training
- routine
- Dri-FIT technology helps you stay dry, comfortable & focused
- Mesh back panel offers lightweight breathability
- Slim fit for a tailored feel
- Machine wash
- 100% polyester



DH8369



Academy Jersey S/S (Youth)

Lifecycle

January 2022 - December 2025

Sizes

XS - XL

RRP 27 CH



DH8369-010



DH8369-100



DH8369-102



DH8369-104



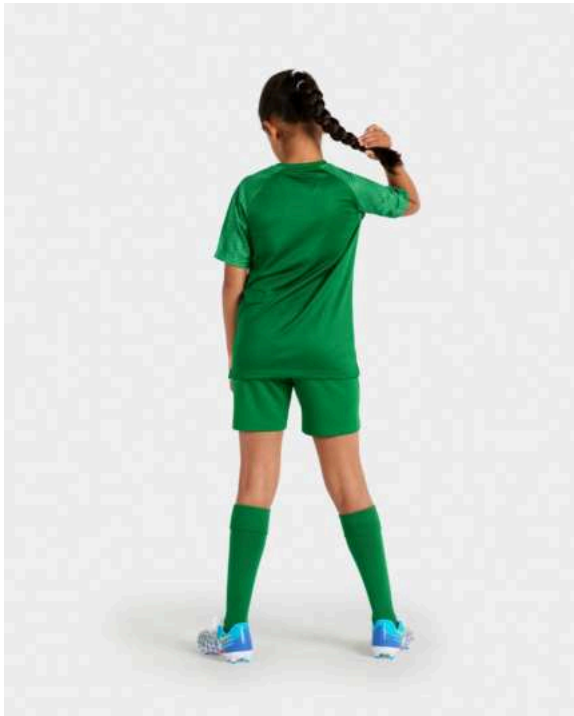
DH8369-302



DH8369-411



DH8369-464



DH8369-657



DH8369-719

Features

- Sweat-wicking fabric to help keep you cool during your pre-match or training routine.
- Dri-FIT technology helps you stay dry, comfortable & focused.
- Mesh back panel offers lightweight breathability.
- Slim fit for a tailored feel
- Machine wash
- 100% polyester





FD7430



Dri-Fit Park Derby IV Jersey

Lifecycle

January 2024 - December 2026

Sizes

XS - 3XL

RRP 30 CH



FD7430-011



FD7430-303



FD7430-410



FD7430-464



FD7430-547



FD7430-677



FD7430-658



FD7430-720

Features

- Nike Dri-FIT technology moves sweat away from your skin for quicker evaporation, helping you stay dry and comfortable.
- 100% polyester
- Slim fit for a tailored feel.





FD7438



Dri-Fit Park Derby IV Jersey (Kids)

Lifecycle

January 2024 - December 2026

Sizes

XS - XL

RRP 25 CH



FD7438-658



FD7438-464



FD7438-011



FD7438-547



FD7438-720



FD7438-303



FD7438-410



FD7438-677

Features

- Nike Dri-FIT technology moves sweat away from your skin for quicker evaporation, helping you stay dry and comfortable.
- 100% polyester
- Slim fit for a tailored feel.



DH8035



Dri-Fit Tiempo Premier II Jersey S/S

Lifecycle

January 2022 - December 2026

Sizes

S - 2XL

RRP 27 CH



DH8035-010



DH8035-052



DH8035-100



DH8035-101



DH8035-302



DH8035-410



DH8035-411



DH8035-412



DH8035-463



DH8035-547



DH8035-657



DH8035-702



DH8035-719



DH8035-819

Features

- Dri-FIT technology moves sweat from your skin for quicker evaporation—helping you stay dry and comfortable.
- Mesh on the back provides additional breathability.
- Slim fit for a tailored feel.
- Machine wash
- 100% polyester





DH8233



Dri-Fit Women's Tiempo Premier II Jersey S/S

Lifecycle

January 2022 - December 2026

Sizes

XS - XL

RRP 27 CH



DH8233-010



DH8233-100



DH8233-463



DH8233-547



DH8233-657



DH8233-702



DH8233-719

Features

- Dri-FIT technology moves sweat from your skin for quicker evaporation—helping you stay dry and comfortable.
- Mesh on the back provides additional breathability.
- Slim fit for a tailored feel.
- Machine wash
- 100% polyester





DH8389



Dri-Fit Tiempo Premier II Jersey S/S (Youth)

Lifecycle

January 2022 - December 2026

Sizes

XS - XL

RRP 22 CH



DH8389-010



DH8389-052



DH8389-100



DH8389-101



DH8389-302



DH8389-410



DH8389-411



DH8389-412



DH8389-463



DH8389-547



DH8389-657



DH8389-702



DH8389-719



DH8389-819

Features

- Dri-FIT technology moves sweat from your skin for quicker evaporation—helping you stay dry and comfortable.
- Mesh on the back provides additional

- breathability.
- Slim fit for a tailored feel.
- Machine wash

- 100% polyester





BV6708



Dri-Fit Park VII Jersey S/S

Lifecycle

January 2020 - December 2025

Sizes

S - 2XL

RRP 27 CH



BV6708-010



BV6708-100



BV6708-302



BV6708-354



BV6708-410



BV6708-412



BV6708-463



BV6708-547



BV6708-635



BV6708-657



BV6708-677



BV6708-702



BV6708-719



BV6708-729



BV6708-819



BV6708-102



BV6708-103



BV6708-101

Features

- Dri-FIT technology helps keep you dry and comfortable.
- Mesh back panel adds breathability.
- Slim fit for a tailored feel.
- This product is made with at least 75% recycled polyester fibers





BV6728



Dri-Fit Women's Park VII Jersey

Lifecycle

January 2020 - December 2025

Sizes

XS - 2XL

RRP 27 CH



BV6728-010



BV6728-100



BV6728-341



BV6728-354



BV6728-410



BV6728-412



BV6728-463



BV6728-547



BV6728-657



BV6728-719

Features

- Dri-FIT technology helps keep you dry and comfortable.
- Mesh on the back adds breathability.
- Slim fit for a tailored feel.
- This product is made with 100% recycled polyester fibers



BV6741



Dri-Fit Park VII Jersey S/S (Youth)

Lifecycle
January 2020 - December 2025

Sizes
XS - XL

RRP 22 CH

								
BV6741-702	BV6741-354	BV6741-729	BV6741-616	BV6741-412	BV6741-819	BV6741-463	BV6741-410	BV6741-657
								
BV6741-547	BV6741-677	BV6741-010	BV6741-302	BV6741-719	BV6741-100	BV6741-635	BV6741-102	BV6741-103

- ### Features
- Dri-FIT technology helps keep you dry and comfortable.
 - Mesh back panel adds breathability.
 - Slim fit for a tailored feel.
 - This product is made with 100% recycled polyester fibers





BV6706



Dri-Fit Park VII Jersey L/S

Lifecycle

January 2020 - December 2025

Sizes

S - 2XL

RRP 32 CH



BV6706-010



BV6706-100



BV6706-302



BV6706-410



BV6706-412



BV6706-463



BV6706-657



BV6706-677



BV6706-702



BV6706-719



BV6706-819

Features

- Dri-FIT technology helps keep you dry and comfortable.
- Mesh back panel adds breathability.
- Slim fit for a tailored feel.
- This product is made with at least 75% recycled polyester fibers



BV6740



Dri-Fit Park VII Jersey L/S (Youth)

Lifecycle

January 2020 - December 2025

Sizes

XS - XL

RRP 27 CH



BV6740-657



BV6740-677



BV6740-010



BV6740-463



BV6740-302



BV6740-410



BV6740-702



BV6740-100



BV6740-819



BV6740-412



BV6740-719

Features

- Dri-FIT technology helps keep you dry and comfortable.
- Mesh back panel adds breathability.
- Slim fit for a tailored feel.
- This product is made with 100% recycled polyester fibers





LITTLE KIDS SET

United by your excitement,
dreams and team colours.

Grow as one.
Play as one.
learn as one.



CD2244



Dri-Fit Park Little Kids Set

Lifecycle

January 2020 - December 2025

Sizes

XS - XL

RRP 47 CH



CD2244-100



CD2244-010



CD2244-463



CD2244-657



CD2244-302



CD2244-410



CD2244-719

Features

- Dri-FIT technology helps keep you dry and comfortable.
- Mesh on the back of the jersey creates ventilation.
- Stretchy waistband on the shorts is lined with mesh for breathability.
- Standard fit for a relaxed, easy feel.
- 100% Polyester





SHORTS

While your jersey tells your story, your shorts serve as the silent supporters of every sprint, every stride and every slide.

They silently move with you through every challenge, allowing you to stay focused on the game. From the first kickoff to the aftermath moments, they're made for comfort, empowering you to keep pushing forward.



FZ9352



Nike Vapor V Men's Dri-FIT ADV Football Knit Shorts

Lifecycle

January 2025 - December 2026

Sizes

XS - 3XL

RRP 65 CH



FZ9352-011



FZ9352-101



FZ9352-463



FZ9352-657

Features

- Nike Dri-FIT ADV technology combines moisture-wicking fabric with advanced engineering and features to help you stay dry and comfortable. Breathable knit fabric helps keep you cool.
- Lightweight design has ribbed insets and plenty of stretch to help you move freely.
- Elastic waistband
- Heat-transfer silicone Swoosh design
- Machine wash
- Imported
- 100% polyester



FD7440



Dri-Fit Venom IV Woven Short

Lifecycle

January 2024 - December 2027

Sizes

XS - 3XL

RRP 47 CH



FD7440-463



FD7440-657



FD7440-010



FD7440-100

Features

- Nike Dri-FIT technology moves sweat away from your skin for quicker evaporation, helping you stay dry and comfortable.
- Men’s inseam is 20cm.
- Slim fit for a tailored look and feel
- Polyester 87% / Spandex 13%



DH8111



Dri-Fit Laser Woven Short V

Lifecycle

January 2022 - December 2025

Sizes

S - 2XL

RRP 32 CH



DH8111-010



DH8111-100



DH8111-302



DH8111-410



DH8111-412



DH8111-463



DH8111-657

Features

- Schweißableitendes Material und atmungsaktives Mesh sorgen für kühlen Tragekomfort und Konzentration.
- Die Nike Dri-FIT-Technologie leitet Schweiß von der Haut weg, wodurch er schnell verdunstet, und ermöglicht so trockenen Tragekomfort.
- Der Bund und der Einsatz am Rücken bestehen aus Mesh, um Atmungsaktivität zu bieten, ohne zu beschweren.
- Schmale Passform für ein körpernahes Tragegefühl
- Maschinenwäsche
- 100 % Polyester





DH8408



Dri-Fit Laser Woven Short V (Youth)

Lifecycle

January 2022 - December 2025

Sizes

XS - XL

RRP 27 CH



DH8408-010



DH8408-100



DH8408-302



DH8408-410



DH8408-412



DH8408-463



DH8408-657

Features

- Schweißableitendes Material und atmungsaktives Mesh sorgen für kühlen Tragekomfort und Konzentration.
- Die Nike Dri-FIT-Technologie leitet Schweiß von der Haut weg, wodurch er schnell verdunstet, und ermöglicht so trockenen Tragekomfort.
- Der Bund und der Einsatz am Rücken bestehen aus Mesh, um Atmungsaktivität zu bieten, ohne zu beschweren.
- Schmale Passform für ein körpernahes Tragegefühl
- Maschinenwäsche
- 100 % Polyester





DR0960



Dri-Fit League III Knit Short

Lifecycle

January 2023 - December 2026

Sizes

XS - 3XL

RRP 27 CH



DR0960-010



DR0960-100



DR0960-410



DR0960-302



DR0960-463



DR0960-052



DR0960-657

Features

- Die Nike Dri-FIT-Technologie leitet Schweiß von der Haut weg, wodurch er schnell verdunstet, und ermöglicht so trockenen Tragekomfort.
- Schmale, optimierte Passform
- Atmungsaktive Mesh-Einsätze an den Seiten sorgen für angenehm kühlen Tragekomfort.
- Ca. 20 cm Beininnenlänge
- Elastischer Bund mit Kordelzug
- Gesticktes Swoosh-Design
- Maschinenwäsche
- 100 % Polyester





DR0968



Dri-Fit League III Knit Short (Youth)

Lifecycle

January 2023 - December 2026

Sizes

XS - XL

RRP 25 CH



DR0968-100



DR0968-302



DR0968-010



DR0968-052



DR0968-463



DR0968-657



DR0968-410

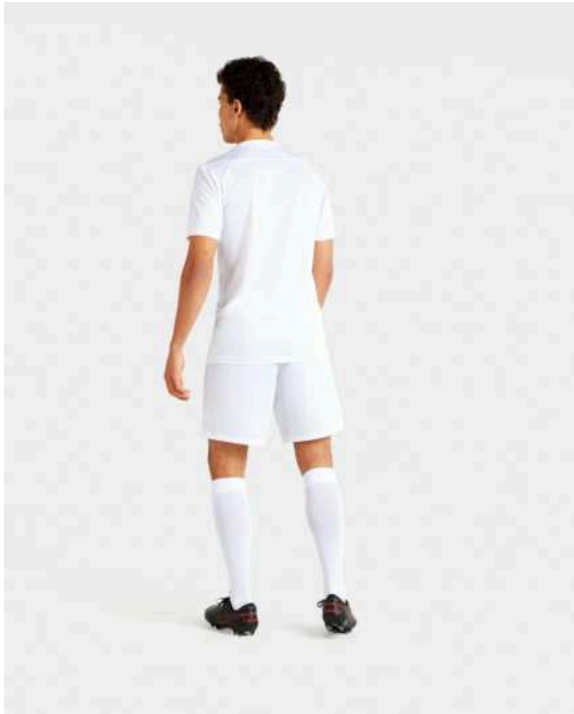
Features

- Die Nike Dri-FIT-Technologie leitet Schweiß von der Haut weg, wodurch er schnell verdunstet, und ermöglicht so trockenen Tragekomfort.
- Schmale, optimierte Passform
- Atmungsaktive Mesh-Einsätze an den Seiten sorgen für angenehm kühlen Tragekomfort.
- Ca. 20 cm Beininnenlänge
- Elastischer Bund mit Kordelzug
- Gesticktes Swoosh-Design
- Maschinenwäsche
- 100 % Polyester





BV6855



Dri-Fit Park III Knit Short

Lifecycle

January 2020 - December 2025

Sizes

S - 2XL

RRP 25 CH



BV6855-010



BV6855-017



BV6855-100



BV6855-302



BV6855-354



BV6855-410



BV6855-412



BV6855-463



BV6855-616



BV6855-657



BV6855-677



BV6855-702



BV6855-719



BV6855-739



BV6855-819



BV6855-635



BV6855-103



BV6855-104

Features

- Dri-FIT-Technologie sorgt für trockenen, ablenkungsfreien Tragekomfort.
- Der elastische Bund mit Mesh-Futter sorgt für Atmungsaktivität.
- Der schmale Schnitt gewährleistet ein passgenaues Tragegefühl
- Dieses Produkt besteht zu 100 % aus recyceltem Polyester





BV6860



Dri-Fit Women's Park III Knit Short

Lifecycle

January 2020 - December 2025

Sizes

XS - 2XL

RRP 25 CH



BV6860-010



BV6860-100



BV6860-410



BV6860-412



BV6860-463



BV6860-657



BV6860-677



BV6860-719



BV6860-547

Features

- Dri-FIT-Technologie sorgt für trockenen, ablenkungsfreien Tragekomfort.
- Der elastische Bund mit Mesh-Futter sorgt für Atmungsaktivität.
- Der schmale Schnitt gewährleistet ein passgenaues Tragegefühl
- Dieses Produkt besteht zu 100 % aus recyceltem Polyester





BV6865



Dri-Fit Park III Knit Short (Youth)

Lifecycle

January 2020 - December 2025

Sizes

XS - XL

RRP 22 CH



BV6865-677



BV6865-463



BV6865-739



BV6865-819



BV6865-719



BV6865-010



BV6865-354



BV6865-017



BV6865-410



BV6865-702



BV6865-412



BV6865-657



BV6865-100



BV6865-302



BV6865-635



BV6865-103



BV6865-104



BV6865-102

Features

- Dri-FIT-Technologie sorgt für trockenen, ablenkungsfreien Tragekomfort.
- Der elastische Bund mit Mesh-Futter sorgt für Atmungsaktivität.
- Der schmale Schnitt gewährleistet ein passgenaues Tragegefühl
- Dieses Produkt besteht zu 100 % aus recyceltem Polyester





MISC SOCKS

Complete your kit with a finishing touch. They could be one game away from becoming a lucky charm.



FQ8253



Dri-Fit Strike Knee High Sock

Lifecycle

January 2024 - December 2025

Sizes

XS - XL

RRP 25 CH



FQ8253-410



FQ8253-103



FQ8253-635



FQ8253-354



FQ8253-010



FQ8253-657



FQ8253-463



FQ8253-719



FQ8253-100



FQ8253-412



FQ8253-302

Features

- Nike Dri-FIT technology moves sweat away from your skin for quicker evaporation, helping you stay dry and comfortable.
- Knee-high length gives you plenty of coverage.





FQ8282



Dri-Fit Strike Sleeve

Lifecycle

January 2024 - December 2025

Sizes

4-5.5 - L/XL

RRP 15 CH



FQ8282-463



FQ8282-010



FQ8282-100



FQ8282-410



FQ8282-657

Features

- Nike Dri-FIT technology moves sweat away from your skin for quicker evaporation, helping you stay dry and comfortable.
- Stretch design fits comfortably over your shin guard.



SX5728



Dri-Fit Academy Sock

Lifecycle

January 2017 - December 2025

Sizes

XS - XL

RRP 15 CH



SX5728-010



SX5728-057



SX5728-100



SX5728-101



SX5728-302



SX5728-411



SX5728-412



SX5728-463



SX5728-545



SX5728-648



SX5728-670



SX5728-702



SX5728-816



SX5728-719



SX5728-103



SX5728-104



SX5728-019

Features

- Dri-FIT technology helps keep feet dry and comfortable.
- Cushioning in high-wear areas helps absorb impact.
- Dynamic arch provides a supportive fit and feel.
- Anatomical left and right socks are designed for a natural fit.
- 97% Nylon/3% Spandex





FIRST LAYERS

Your first layer of warmth is designed to keep you comfortable and focused. Play with your heart, regardless of the conditions.



AV2609



Dri-Fit Park First Layer

Lifecycle

January 2019 - December 2025

Sizes

S - 2XL

RRP 32 CH



AV2609-057



AV2609-010



AV2609-100



AV2609-329



AV2609-547



AV2609-410



AV2609-463



AV2609-702



AV2609-739



AV2609-302



AV2609-819



AV2609-657



AV2609-412



AV2609-719

Features

- Dri-FIT technology helps you stay dry, comfortable and focused.
- Stretchy fabric with a smooth face provides a low-friction underlayer.
- Invisible thumb loops stay hidden when not in use.
- Tight fit gives a streamlined look and feel.
- Raglan sleeves eliminate the shoulder seam to help you move freely.
- Swoosh design trademark is heat transferred on the center of the chest.
- This product is made with 100% recycled polyester fibers





AV2610



Dri-Fit Women's Park First layer

Lifecycle

January 2019 - December 2025

Sizes

XS - XL

RRP 32 CH



AV2610-010



AV2610-100



AV2610-302



AV2610-410



AV2610-412



AV2610-463



AV2610-657



AV2610-057

Features

- Park First Layer Trikot für Schutz ohne Ablenkungen
- Die integrierte Dri-FIT-Technologie hält dich trocken und sorgt für ablenkungsfreien Tragekomfort.
- Keine Reibung durch eine untere Lage aus dehnbarem Material und glatter Struktur.
- Die Daumenöffnungen bleiben "unsichtbar", wenn sie nicht benötigt werden.
- Raglanärmel ohne Schulternähte sorgen für Bewegungsfreiheit.
- In der Mitte der Brustpartie befindet sich der Swoosh als texturierter Thermodruck.
- Dieses Produkt besteht zu 100 % aus recyceltem Polyester





AV2611

Matchday

Catalogue 2025

niketeamfootball.com

Dri-Fit Park First Layer (Youth)

Lifecycle

January 2019 - December 2025

Sizes

XS - XL

RRP 27 CH



AV2611-739



AV2611-547



AV2611-100



AV2611-302



AV2611-329



AV2611-412



AV2611-463



AV2611-702



AV2611-819



AV2611-616



AV2611-057



AV2611-657



AV2611-410



AV2611-010



AV2611-719



AV2611-635

Features

- Dri-FIT-Technologie sorgt für trockenen, ablenkungsfreien Tragekomfort.
- Keine Reibung durch eine untere Lage aus dehnbarem Material und glatter Struktur.
- Daumenöffnungen bleiben "unsichtbar", wenn sie nicht benötigt werden.
- Eng anliegende Passform für optimierten Look und Tragekomfort.
- Raglanärmel ohne Schulternähte sorgen für

- Bewegungsfreiheit.
- In der Mitte der Brustpartie befindet sich der Swoosh als texturierter Thermodruck.
- Dieses Produkt besteht zu 100 % aus recyceltem Polyester





DH8128



Dri-Fit Strike Nike Pro Short

Lifecycle

January 2022 - December 2029

Sizes

XS - 2XL

RRP 35 CH



DH8128-010



DH8128-100



DH8128-302



DH8128-410



DH8128-412



DH8128-463



DH8128-657



DH8128-677



DH8128-719



DH8128-819



DH8128-547



DH8128-635



DH8128-702



DH8128-052

Features

- Schweißableitendes Material hält dich angenehm kühl und konzentriert, damit du deine Fähigkeiten verfeinern kannst.
- Nike Pro-Material sorgt für ein stützendes Tragegefühl und hält dich angenehm kühl, wenn es heiß hergeht.
- Das elastische Material mit Kompressionspassform bietet uneingeschränkte Training.
- Enge Passform für ein körpernahes Tragegefühl
- Maschinenwäsche
- 93 % Polyester/7 % Elasthan





DH8327



Dri-Fit Women's Strike Nike Pro Short

Lifecycle

January 2022 - December 2029

Sizes

XS - XL

RRP 35 CH



DH8327-010



DH8327-100



DH8327-302



DH8327-410



DH8327-412



DH8327-463



DH8327-657



DH8327-677



DH8327-719



DH8327-819



DH8327-052

Features

- Schweißableitendes Material hält dich angenehm kühl und konzentriert, damit du deine Fähigkeiten verfeinern kannst.
 - Nike Pro-Material sorgt für ein stützendes
- Tragegefühl und hält dich angenehm kühl, wenn es heiß hergeht.

 - Das elastische Material mit Kompressionspassform bietet uneingeschränkte
- Training.

 - Enge Passform für ein körpernahes Tragegefühl
 - Maschinenwäsche
 - 93 % Polyester/7 % Elasthan





FN2374



Nike Pro Leak Protection Short

Lifecycle

January 2024 - December 2029

Sizes

XS - XL

RRP 42 CH



FN2374-010



FN2374-463



FN2374-410



FN2374-100

Features

- Nike Dri-FIT technology moves sweat away from your skin for quicker evaporation, helping you stay dry and comfortable.
- Women's short inseam is 6in.
- An ultrathin liner helps prevent leaks when worn as a backup to your usual protection.
- Polyester 83% / Elastane 17%





DX6815



Dri-Fit High-Support Non-Padded Sports Bra

Lifecycle

July 2023 - December 2024

Sizes

XSA-C - 4XF-G

RRP 65 CH



DX6815-010



DX6815-100



Features

- Die Nike Dri-FIT-Technologie leitet Schweiß von der Haut weg, wodurch er schnell verdunstet, und ermöglicht so trockenen Tragekomfort.
- Das verstellbare Unterband und der längere Ausschnitt, die Rückseite und die Armausschnitte erleichtern das An- und Ausziehen und ermöglichen eine individuelle Passform.
- Mesh-Futter innen, Mesh-Einsätze hinten und ein Ausschnitt hinten für luftigen Tragekomfort
- Mit besonders elastischem Material, das sich deinen Bedürfnissen im Moment anpasst und sich wie eine zweite Haut mit dir bewegt, solltest du dir keine Sorgen mehr um deinen Sport-BH machen müssen, während du dich

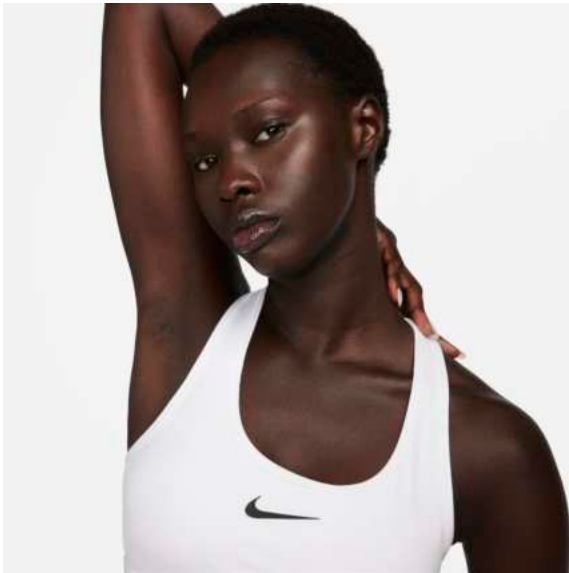
auf das Warm-up, die Wiederholungen und das Cool-down konzentrierst.

- Ab Herbst 2023 verfügbar
- Body 64 % Polyester/36 % Elasthan





DX6821



Dri-Fit Swoosh Bra Medium Support

Lifecycle

January 2024 - December 2024

Sizes

2XS - 2XL

RRP 50 CH



DX6821-100



DX6821-010

Features

- Nike Dri-FIT technology moves sweat away from your skin for quicker evaporation, helping you stay dry and comfortable. It combines with a mesh lining to help keep you cool.
- The Swoosh sports bra has long been a partner to your workouts and beyond, but not everyone has the same needs. Looking for minimal coverage and a gentle hold? The Swoosh Light Support is the bra for you. And if you want fuller coverage and more adjustability, the Swoosh High Support is ready to go wherever you do.
- When you're going hard, the bra's lightweight, adaptive fabric feels like a second skin for superior comfort and support. When it's time

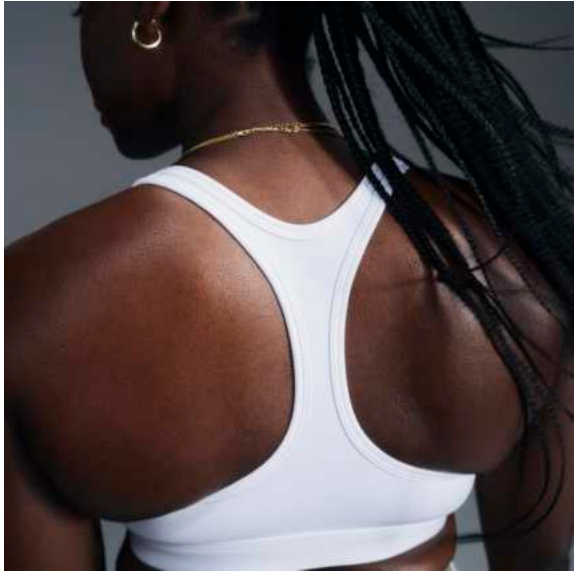
rest, it recovers quickly and provides a snug hold and subtle shaping. Super-stretchy fibers make for an easy on/off experience so that you don't have to bend over backward to get out of your bra.

- 72% Polyester/28% Elastane





DX6817



Nike Swoosh Light Support Women's Non-Padded Sports Bra

Lifecycle

January 2025 - September 2026

Sizes

2XS - 2XL

RRP 42 CH



DX6817-010

DX6817-100

Features

- When you're moving, the bra's lightweight, adaptive fabric feels like a second skin for superior comfort. When it's time to rest, it recovers quickly and provides gentle, all-day support. Super-stretchy fibers make for an easy on/off experience so that you don't have to bend over backward to get out of your bra.
- Nike Dri-FIT technology moves sweat away from your skin for quicker evaporation, helping you stay dry and comfortable. It combines with thin racerback straps and minimized coverage to increase your airflow.
- The Swoosh sports bra has long been a partner to your workouts and beyond, but not everyone has the same needs. Like the modesty and structured feel of sewn-in pads? Try the Swoosh Medium Support. And if you

- want even fuller coverage and more adjustability, the Swoosh High Support is ready to go wherever you do.
- Machine wash
- Imported
- Body: 82% polyester/18% spandex. Lining: 82% polyester/18% spandex.





FJ7161



Matchday



Nike Swoosh Big Kids' (Girls') Sports Bra

Lifecycle

January 2025 - December 2026

Sizes

XS - XL

RRP 32 CH



FJ7161-010



FJ7161-100

Features

- Wide, comfy straps give you a supportive fit. Nike Dri-FIT technology moves sweat away from your skin for quicker evaporation, helping you stay dry and comfortable.
- Two layers of fabric across the front feel soft and supportive while giving you plenty of coverage.
- Soft, lightweight fabric stretches to comfortably hug your body while an elastic band provides a snug fit. A classic racerback design allows for easy movement while flat and smooth seams feel comfortable under your outfit.
- Medium support
- Machine wash
- Imported
- 82% polyester/18% spandex



FB7952



Matchday



Men's Dri-Fit Nike Pro Tight

Lifecycle

January 2024 - December 2024

Sizes

S - 2XL

RRP 47 CH



FB7952-010

Features

- Nike Dri-FIT technology moves sweat away from your skin for quicker evaporation, helping you stay dry and comfortable.
- Stretchy knit fabric gives a body-hugging feel so you can move naturally through your workouts and activities.
- Soft and stretchy waistband sits snug above your hips.
- Side pocket helps store small items, like keys and cards.
- 90% Polyester/10% Elastane



CZ9779

Matchday

Catalogue 2025

niketeamfootball.com



Women's Dri-Fit Nike Pro Tight

Lifecycle

January 2021 - December 2024

Sizes

XS - 2XL

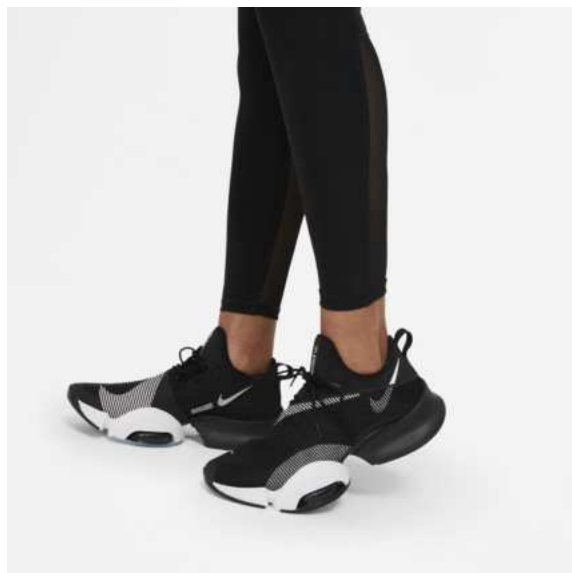
RRP 52 CH



CZ9779-010

Features

- Die Dri-FIT-Technologie hält dich trocken und sorgt für ablenkungsfreien Tragekomfort.
- Der breite, geschmeidige, mittelhoch geschnittene Bund sorgt für ein stützendes Tragegefühl um deinen Core.
- Belüftete Mesh-Einsätze an der Rückseite der unteren Beine sorgen für Luftzirkulation und Atmungsaktivität.
- Dieses Produkt besteht aus mindestens 50 % recycelten Polyesterfasern
- 83 % Polyester/17 % Elasthan





IB9382



Matchday



Nike One Women's High-Waisted Full-Length Leggings

Lifecycle

January 2025 - December 2025

Sizes

XS - 2XL

RRP 60 CH



IB9382-010

Features

- No One works for everything, and that's why we're offering these in multiple lengths for every activity and every mood. Plus, they pair perfectly with any of our Nike One tops and bras, available in several colors to complete your look.
- Nike Dri-FIT technology moves sweat away from your skin for quicker evaporation, helping you stay dry and comfortable.
- Back pocket fits most phones.
- High waist design meets cropped tops.
- Machine Wash
- Imported
- Body: 80% Polyester, 20% spandex; Waist Lining: 80% Polyester, 20% spandex; Gusset Lining: 100% Polyester

A female goalkeeper with her hair in a bun, wearing a black and white striped jersey and yellow and white gloves, is shouting with her mouth wide open. She is in front of a soccer goal with a net. The background is a blurred outdoor setting with trees and a clear sky.

GOALKEEPER



THE LAST LINE OF DEFENCE



It's your moment goalkeeper. As you take your position, you know that every second counts. When the opponent charges and the ball comes at you fast and fierce, years of training, diving, leaping, and refining your instincts come to life. Time slows as you prepare for a split-second decision. It's not just about the save; it's about everything that has led to this.



The shadow looms, and the weight of the game rests on your shoulders. When the net ripples, all eyes fall on you. But you can push aside the doubt. As the ball hurtles towards the corner and you stretch with every ounce of strength, your fingertips grazing are just enough to deflect it away from the goal.

With each save you become more than a protector. You're the heartbeat of the team, the reason the crowd holds their breath and the spark that keeps belief alive, even in the darkest times.



FD7474



Dri-Fit Gardien V Goalkeeper Jersey L/S

Lifecycle

January 2024 - December 2025

Sizes

XS - 3XL

RRP 77 CH



FD7474-644



FD7474-354



FD7474-060



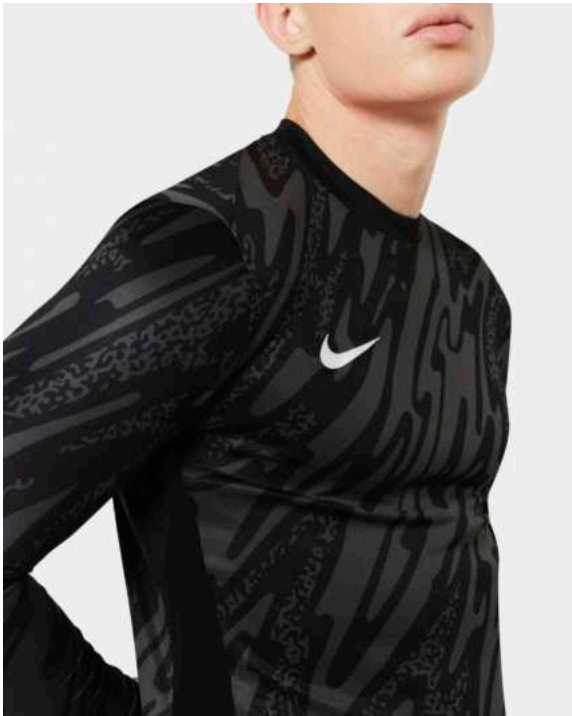
FD7474-329



FD7474-719

Features

- Nike Dri-FIT technology moves sweat away from your skin for quicker evaporation, helping you stay dry and comfortable.
- Slim fit for a tailored look and feel.
- 100% polyester





FD7477



Dri-Fit Women's Gardien V Goalkeeper Jersey L/S

Lifecycle

January 2024 - December 2025

Sizes

XS - 2XL

RRP 77 CH



FD7477-060



FD7477-644



FD7477-354



FD7477-329



FD7477-719

Features

- Nike Dri-FIT technology moves sweat away from your skin for quicker evaporation, helping you stay dry and comfortable.
- New women's fit adds more space to the waist, allowing them to be at their best.
- 100% polyester



FD7480



Dri-Fit Gardien V Goalkeeper Jersey L/S (Kids)

Lifecycle

January 2024 - December 2025

Sizes

XS - XL

RRP 70 CH



FD7480-060



FD7480-354



FD7480-644



FD7480-329



FD7480-719

Features

- Nike Dri-FIT technology moves sweat away from your skin for quicker evaporation, helping you stay dry and comfortable.
- Standard fit for classic feel and comfort.
- 100% polyester



FD7482



Dri-Fit Gardien V Goalkeeper Jersey S/S

Lifecycle

January 2024 - December 2025

Sizes

XS - 3XL

RRP 70 CH



FD7482-060



FD7482-644



FD7482-354



FD7482-329



FD7482-719

Features

- Nike Dri-FIT technology moves sweat away from your skin for quicker
- evaporation, helping you stay dry and comfortable
- Slim fit for a tailored look and feel
- 100% polyester



CJ6066



Dri-Fit Park IV GK Jersey L/S

Lifecycle

January 2020 - December 2025

Sizes

S - 2XL

RRP 47 CH



CJ6066-010



CJ6066-052



CJ6066-463



CJ6066-702



CJ6066-819

Features

- Mesh across the back helps keep you cool when the game heats up.
- Dri-FIT technology helps keep you dry, comfortable and focused.
- Mesh across the back provides added breathability.
- Slim fit for a tailored feel.
- 100% Polyester





CJ6072



Dri-Fit Park IV GK Jersey L/S (Youth)

Lifecycle

January 2020 - December 2025

Sizes

XS - XL

RRP 40 CH



CJ6072-052



CJ6072-010



CJ6072-463



CJ6072-819



CJ6072-702

Features

- Mesh across the back helps keep you cool when the game heats up.
- Dri-FIT technology helps keep you dry, comfortable and focused.
- Mesh across the back provides added breathability.
- Slim fit for a tailored feel.
- 100% Polyester





CV0045



Dri-Fit Padded Goalkeeper Tight

Lifecycle

January 2020 - December 2027

Sizes

S - 2XL

RRP 77 CH



CV0045-010

Features

- Die speziell geformte, flexible Polsterung an der Hüfte dämpft Stöße.
- Die Dri-FIT-Technologie sorgt für trockenen und ablenkungsfreien Tragekomfort.
- 80 % Polyester/20 % Elasthan





CV0050



Dri-Fit Padded Goalkeeper Tight (Youth)

Lifecycle

January 2020 - December 2027

Sizes

XS - XL

RRP 65 CH



CV0050-010

Features

- Die speziell geformte Polsterung an der Hüfte dämpft Stöße.
- Die Dri-FIT-Technologie sorgt für trockenen und ablenkungsfreien Tragekomfort.
- 80 % Polyester/20 % Elasthan



CV0053



Dri-Fit Padded Goalkeeper Short

Lifecycle

January 2020 - December 2027

Sizes

S - 2XL

RRP 65 CH



CV0053-010

Features

- Die speziell geformte, flexible Polsterung an der Hüfte dämpft Stöße.
- Die Dri-FIT-Technologie sorgt für trockenen und ablenkungsfreien Tragekomfort.
- 80 % Polyester/20 % Elasthan





CV0057



Dri-Fit Padded Goalkeeper Short (Youth)

Lifecycle

January 2020 - December 2027

Sizes

XS - XL

RRP 52 CH



CV0057-010

Features

- Die speziell geformte Polsterung an der Hüfte dämpft Stöße.
- Die Dri-FIT-Technologie sorgt für trockenen und ablenkungsfreien Tragekomfort.
- 80 % Polyester/20 % Elasthan



HQ0257



Nike Match Goalkeeper Football Gloves

Lifecycle

January 2025 - June 2026

Sizes

6 - 11

RRP 35 CH



HQ0257-010



HQ0257-100

Features

- Adjustable wrist strap
- Hand wash
- Imported
- 40% polyester/33% latex/21% EVA/6% nylon



HQ0258



Nike Match Jr. Big Kids' Goalkeeper Football Gloves

Lifecycle

January 2025 - June 2026

Sizes

3 - 8

RRP 30 CH



HQ0258-010



HQ0258-100

Features

- Adjustable wrist strap
- Hand wash
- Imported
- 40% polyester/33% latex/21% ethylene vinyl acetate (EVA)/6% nylon



From late-night warm-ups to post-session jokes, football is about putting in the work and finding joy in the journey.

TRAINING



TRAINING

- 01.

P.95

STRIKE 24
- 02.

P.112

ACADEMY PRO 24
- 03.

P.140

ACADEMY 25
- 04.

P.168

PARK 20



EMBRACING THE GRIND



A training session is more than just practice—it's a testament to your dedication, passion, and the bond you share with your team. It's pushing through when your body is tired, when the weather is unforgiving, and when the goal feels distant. Yet, it's in these moments that shape your future on the field.



There's something beautiful in the grind. The repetition of drills, the precise passes, the sprints that leave you breathless. Training is where heart and hard work collide. It's where resilience is built, skills are sharpened, and where your love for the game and your team deepens with every rep.

It's the late-night warm-ups, the post-session jokes, and the shared moments of both frustration and triumph. It's where bonds are strengthened, and every drop of sweat represents not just a commitment to the game, but to each other.

Every stride, every drill, every missed shot is a step toward something greater. It's not about perfection—it's about showing up, putting in the work, and finding joy in the journey.

Nike is there to support every step of that journey, with gear made to endure the grind. Each piece is designed to withstand the realities of grassroots football, supporting every player through long sessions, unpredictable weather, and the everyday challenges of training. It's gear built to keep you going—through thick and thin, in every practice and every moment shared on the field.



BUILDING BROTHERHOOD



After a long day, it’s all for the boys. Honing skills, while building bonds.

Where the sweat, the grind, and the camaraderie build something stronger than just a team—it builds a brotherhood.

This is where the true work begins, when you show up tired but leave more connected, more driven, and more determined. Training is where loyalty is earned, and where hard work turns into respect.



EMPOWERED WOMEN, EMPOWER WOMEN



Step onto the field with confidence in training gear designed to fit, flatter and fuel your performance.

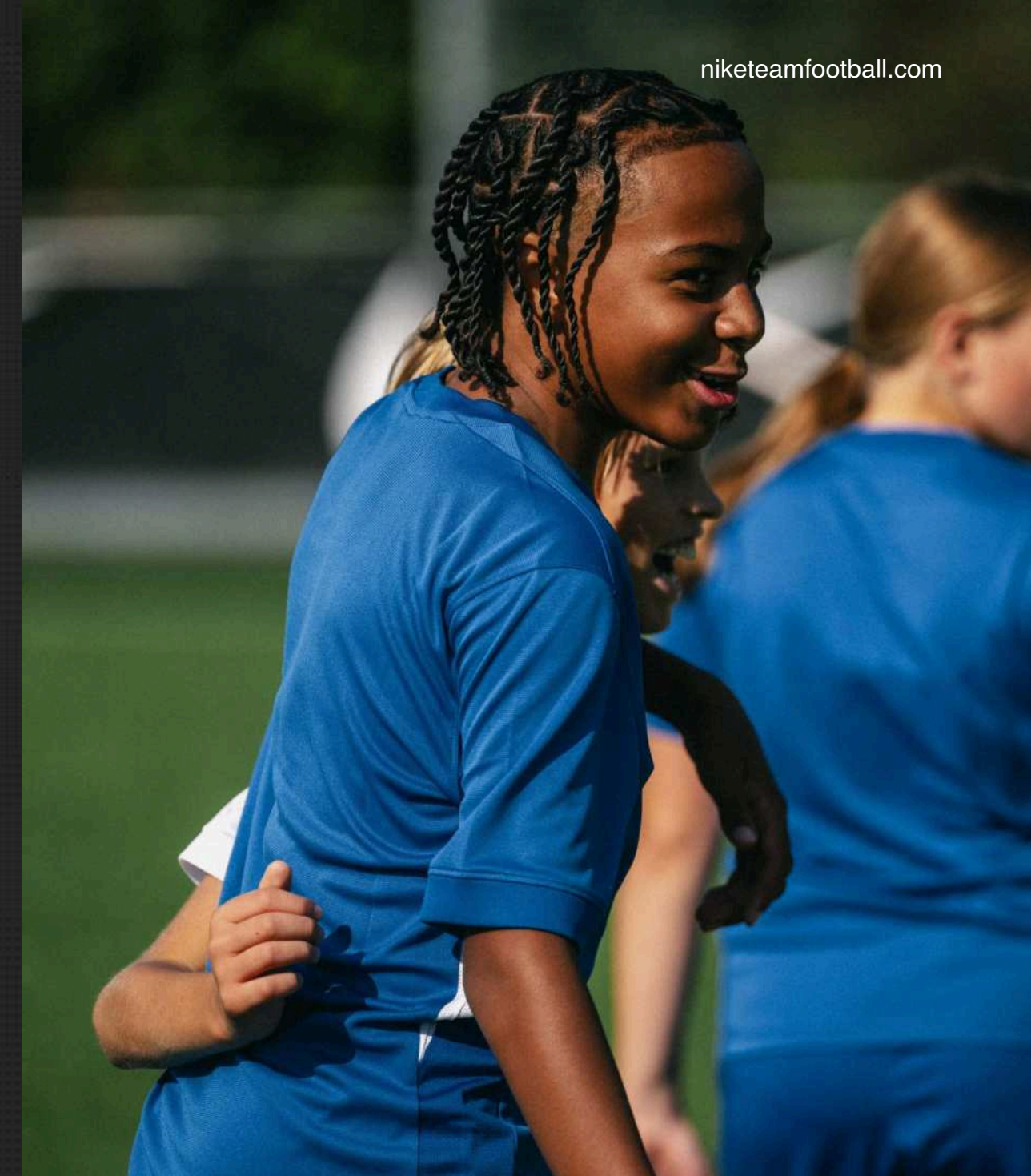
Every training session is an opportunity to uplift one another and build a community, rooted in strength and trust. As women step onto the field, they bring not just skill but a powerful sense of unity. Together you celebrate stamina, embrace the sweat and push through every challenge, because when women support women, they redefine the game.





GEAR FOR THE NEXT GENERATION.

Every practice is an opportunity to learn, laugh, and grow together. Young athletes dive into drills filled with energy, excitement, and the joy of discovery.



With training gear designed for comfort and movement, each session transforms into a playground of skills and friendships. From lighthearted competitions to surprising yourself with hidden talents, every moment is a chance to shine.

Celebrate the fun of teamwork and the thrill of progress, where every kick, every giggle and every shared experience ignites a lifelong passion for football.



STRIKE 24



FD7487



Dri-Fit Strike 24 Training Top

Lifecycle

January 2024 - December 2025

Sizes

XS - 3XL

RRP 47 CH



FD7487-657



FD7487-465



FD7487-458



FD7487-010

Features

- Nike Dri-FIT technology moves sweat away from your skin for quicker evaporation, helping you stay dry and comfortable.
- Standard fit for classic feel and comfort.
- 100% polyester



FD7490



Dri-Fit Women's Strike 24 Training Top

Lifecycle

January 2024 - December 2025

Sizes

XS - 2XL

RRP 47 CH



FD7490-657



FD7490-465



FD7490-010



FD7490-458

Features

- Nike Dri-FIT technology moves sweat away from your skin for quicker evaporation, helping you stay dry and comfortable.
- Standard fit for classic feel and comfort.
- 100% polyester



FD7493



Dri-Fit Strike 24 Training Top (Kids)

Lifecycle

January 2024 - December 2025

Sizes

XS - XL

RRP 42 CH



FD7493-458



FD7493-010



FD7493-657



FD7493-465

Features

- Nike Dri-FIT technology moves sweat away from your skin for quicker evaporation, helping you stay dry and comfortable.
- Standard fit for classic feel and comfort.
- 100% polyester



Strike

Catalogue 2025

niketeamfootball.com

FD7535



Dri-Fit Strike 24 Knit Short

Lifecycle

January 2024 - December 2025

Sizes

XS - 3XL

RRP 47 CH



FD7535-451



FD7535-010

Features

- Nike Dri-FIT technology moves sweat away from your skin for quicker evaporation, helping you stay dry and comfortable
- Standard fit for classic feel and comfort.
- Men's inseam is 21cm.
- Zippered pockets for secure storage.
- 100% polyester





FD7537



Dri-Fit Women's Strike 24 Knit Short

Lifecycle

January 2024 - December 2025

Sizes

I Tall XS-T - 2XL-T

RRP 47 CH



FD7537-010



FD7537-451

Features

- Nike Dri-FIT technology moves sweat away from your skin for quicker evaporation, helping you stay dry and comfortable
- Standard fit for classic feel and comfort.
- Women's inseam is 15cm.
- Zippered pockets for secure storage.
- 100% polyester





FD7541



Dri-Fit Strike 24 Knit Short (Kids)

Lifecycle

January 2024 - December 2025

Sizes

XS - XL

RRP 42 CH



FD7541-451



FD7541-010

Features

- Nike Dri-FIT technology moves sweat from your skin for quicker
- evaporation—helping you stay dry and comfortable
- 100% polyester



FD7587



Dri-Fit Strike 24 Drill Top

Lifecycle

January 2024 - December 2025

Sizes

XS - 3XL

RRP 105 CH



FD7587-657



FD7587-467



FD7587-455



FD7587-010

Features

- Endure on the body and sleeves is a Dri-Fit circular knit fabric, wicking sweat away from the body, with elastane content to enable stretch for range of motion.
- This garment is made with 92% recycled materials.
- A thumb loop at the end of the sleeve opening gives the athlete the option to loop over their thumb, for a locked in, secure feeling.
- 100% polyester



FD7591



Dri-Fit Strike 24 Drill Top (Kids)

Lifecycle

January 2024 - December 2025

Sizes

XS - XL

RRP 95 CH



FD7591-657

Features

- Endure on the body and sleeves is a Dri-Fit circular knit fabric, wicking sweat away from the body, with elastane content to enable stretch for range of motion.
- This garment is made with 92% recycled materials.
- A thumb loop at the end of the sleeve opening gives the athlete the option to loop over their thumb, for a locked in, secure feeling.
- 100% polyester



FD7569



Dri-Fit Strike 24 Drill Top

Lifecycle

January 2024 - December 2025

Sizes

XS - 3XL

RRP 70 CH



FD7569-455



FD7569-467



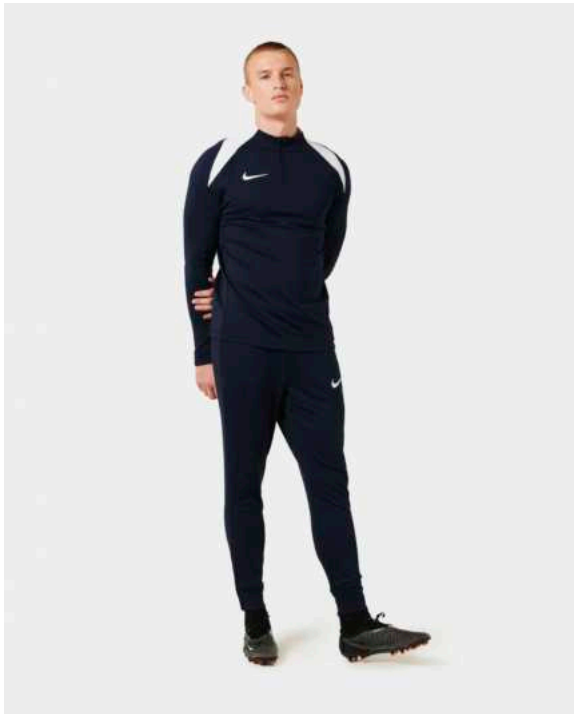
FD7569-010



FD7569-657

Features

- Nike Dri-FIT technology moves sweat away from your skin for quicker evaporation, helping you stay dry and comfortable.
- Slim fit for a tailored feel.
- Thumb loop at the end of sleeve opening.
- Polyester 91% / Spandex 9%





FD7567



Dri-Fit Women's Strike 24 Knit Crew Top

Lifecycle

January 2024 - December 2025

Sizes

XS - 2XL

RRP 70 CH



FD7567-458



FD7567-010



FD7567-465

Features

- This garment is made with 92% recycled materials
- A thumb loop at the end of the sleeve opening gives the athlete the option to loop over their thumb, for a locked in, secure feeling.
- Endure on the body and sleeves is a Dri-Fit circular knit fabric, wicking sweat away from the body, with elastane content to enable stretch for range of motion. A zipper from the neck opening along the shoulder seam keeps the front neck clear of distraction, but still allows for on and off ease.
- Polyester 91% / Spandex 9%



FD7573



Strike 24 Drill Top (Kids)

Lifecycle

January 2024 - December 2025

Sizes

XS - XL

RRP 65 CH



FD7573-455



FD7573-010



FD7573-467



FD7573-657

Features

- Nike Dri-FIT technology moves sweat away from your skin for quicker evaporation, helping you stay dry and comfortable.
- Slim fit for a tailored feel.
- Thumb loop at the end of sleeve opening.
- Polyester 91% / Spandex 9%



FD7579



Dri-Fit Strike 24 Knit Track Jacket

Lifecycle

January 2024 - December 2025

Sizes

XS - 3XL

RRP 82 CH



FD7579-455



FD7579-010



FD7579-657



FD7579-468

Features

- Nike Dri-FIT technology moves sweat away from your skin for quicker evaporation, helping you stay dry and comfortable.
- Standard fit for classic feel and comfort.
- Zippered pockets for secure storage.
- 100% polyester



FD7583



Dri-Fit Women's Strike 24 Knit Track Jacket

Lifecycle

January 2024 - December 2025

Sizes

XS - 2XL

RRP 82 CH



FD7583-455



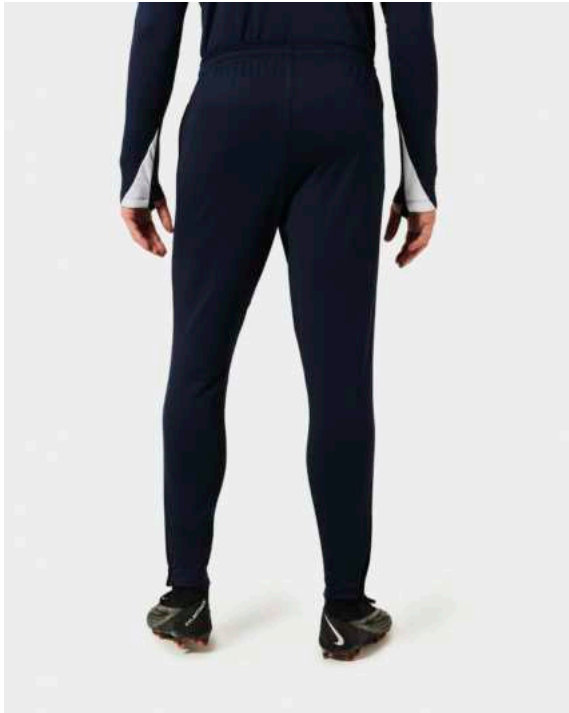
FD7583-010

Features

- Nike Dri-FIT technology moves sweat away from your skin for quicker evaporation, helping you stay dry and comfortable.
- Standard fit for classic feel and comfort.
- Zippered pockets for secure storage.
- 100% polyester



FD7574



Dri-Fit Strike 24 Knit Pant

Lifecycle

January 2024 - December 2025

Sizes

XS - 3XL

RRP 70 CH



FD7574-451



FD7574-010

Features

- Nike Dri-FIT technology moves sweat away from your skin for quicker evaporation, helping you stay dry and comfortable.
- Slim fit for a tailored look and feel.
- Zippered pockets for secure storage.
- Lower ankle zipper allows for easy removal over cleats.
- Polyester 91% / Spandex 9%





FD7576



Dri-Fit Women's Strike 24 Knit Pant

Lifecycle

January 2024 - December 2025

Sizes

XS - 2XL

RRP 70 CH



FD7576-010



FD7576-451

Features

- Nike Dri-FIT technology moves sweat away from your skin for quicker evaporation, helping you stay dry and comfortable.
- Standard fit for classic feel and comfort.
- Zippered pockets for secure storage.
- Lower ankle zipper allows for easy removal over cleats.
- Polyester 91% / Elastane 9%



FD7578



Dri-Fit Strike 24 Knit Pant (Kids)

Lifecycle

January 2024 - December 2025

Sizes

XS - XL

RRP 65 CH



FD7578-010



FD7578-451

Features

- Nike Dri-FIT technology moves sweat away from your skin for quicker evaporation, helping you stay dry and comfortable.
- Slim fit for a tailored look and feel.
- Zippered pockets for secure storage.
- Lower ankle zipper allows for easy removal over cleats.
- Polyester 91% / Spandex 9%



ACADEMY PRO 24



FD7592



Dri-Fit Academy Pro 24 Training Top

Lifecycle

January 2024 - December 2026

Sizes

XS - 3XL

RRP 35 CH



FD7592-458



FD7592-010



FD7592-657



FD7592-465



FD7592-329

Features

- Nike Dri-FIT technology moves sweat away from your skin for quicker evaporation, helping you stay dry and comfortable.
- Slim fit for a tailored look and feel.
- 100% polyester



FD7594



Dri-Fit Women's Academy Pro 24 Training Top

Lifecycle

January 2024 - December 2026

Sizes

XS - 2XL

RRP 35 CH



FD7594-010



FD7594-458



FD7594-465



FD7594-657

Features

- Nike Dri-FIT technology moves sweat away from your skin for quicker evaporation, helping you stay dry and comfortable.
- New women's fit adds more space to the waist, allowing them to be at their best
- 100% polyester





FD7605



Dri-Fit Academy Pro 24 Knit Short

Lifecycle

January 2024 - December 2026

Sizes

XS - 3XL

RRP 35 CH



FD7605-010



FD7605-451

Features

- Dri-FIT technology helps you stay dry, comfortable & focused
- 100% polyester





FD7608



Dri-Fit Women's Academy Pro 24 Knit Short

Lifecycle

January 2024 - December 2026

Sizes

I Tall XS-T - 2XL-T

RRP 35 CH



FD7608-010



FD7608-451

Features

- Nike Dri-FIT technology moves sweat away from your skin for quicker evaporation, helping you stay dry and comfortable
- Standard fit for classic feel and comfort.
- Women's inseam is 10.5cm.
- Zippered pockets for secure storage.
- 100% polyester





FD7610



Dri-Fit Academy Pro 24 Knit Short (Kids)

Lifecycle

January 2024 - December 2026

Sizes

XS - XL

RRP 30 CH



FD7610-010



FD7610-451

Features

- Nike Dri-FIT technology moves sweat away from your skin for quicker evaporation, helping you stay dry and comfortable.
- Standard fit for classic feel and comfort.
- Youth inseam grades by size from 17.7cm for a Medium
- 100% polyester



FD7667



Dri-Fit Academy Pro 24 Drill Top

Lifecycle

January 2024 - December 2026

Sizes

XS - 3XL

RRP 60 CH



FD7667-455



FD7667-010



FD7667-329



FD7667-657



FD7667-467

Features

- Nike Dri-FIT technology moves sweat away from your skin for quicker evaporation, helping you stay dry and comfortable.
- Standard fit for classic feel and comfort.
- Thumb loop at the end of sleeve opening.
- 100% polyester





FD7669



Dri-Fit Women's Academy Pro 24 Drill Top

Lifecycle

January 2024 - December 2026

Sizes

XS - 2XL

RRP 60 CH



FD7669-467



FD7669-010



FD7669-455



FD7669-657

Features

- Nike Dri-FIT technology moves sweat away from your skin for quicker evaporation, helping you stay dry and comfortable.
- Standard fit for classic feel and comfort.
- Thumb loop at the end of sleeve opening.
- 100% polyester





FD7671



Nike Dri-FIT Academy Pro 24 Kids Drill Top

Lifecycle

January 2024 - December 2026

Sizes

XS - XL

RRP 52 CH



FD7671-657



FD7671-467



FD7671-329



FD7671-455



FD7671-010

Features

- Nike Dri-FIT technology moves sweat away from your skin for quicker evaporation, helping you stay dry and comfortable.
- Standard fit for classic feel and comfort.
- Thumb loop at the end of sleeve opening.
- Machine wash
- Imported
- 100% polyester



FD7681



Dri-Fit Academy Pro 24 Knit Track Jacket

Lifecycle

January 2024 - December 2026

Sizes

XS - 3XL

RRP 65 CH



FD7681-010



FD7681-455



FD7681-468



FD7681-657



FD7681-329

Features

- Nike Dri-FIT technology moves sweat away from your skin for quicker evaporation, helping you stay dry and comfortable.
- Slim fit for a tailored look and feel.
- Zippered pockets for secure storage.
- 100% polyester



FD7683



Dri-Fit Women's Academy Pro 24 Knit Track Jacket

Lifecycle

January 2024 - December 2026

Sizes

XS - 2XL

RRP 65 CH



FD7683-657



FD7683-455



FD7683-010



FD7683-468

Features

- Nike Dri-FIT technology moves sweat away from your skin for quicker evaporation, helping you stay dry and comfortable.
- Loose fit for an oversized, roomy feel
- Zippered pockets for secure storage.
- 100% polyester





FD7685



Dri-Fit Academy Pro 24 Knit Track Jacket (Kids)

Lifecycle

January 2024 - December 2026

Sizes

XS - XL

RRP 60 CH



FD7685-455



FD7685-329



FD7685-468



FD7685-010



FD7685-657

Features

- Nike Dri-FIT technology moves sweat away from your skin for quicker evaporation, helping you stay dry and comfortable.
- Standard fit for classic feel and comfort
- Zippered pockets for secure storage.
- 100% polyester



FD7672



Academy Pro 24 Knit Pant

Lifecycle

January 2024 - December 2026

Sizes

XS - 3XL

RRP 60 CH



FD7672-010



FD7672-451

Features

- Nike Dri-FIT technology moves sweat away from your skin for quicker evaporation, helping you stay dry and comfortable.
- Slim fit for tailored look and feel.
- Zippered pockets for secure storage.
- Lower ankle zipper allows for easy removal over cleats.
- 100% polyester





FD7677



Therma-Fit Women's Academy Pro 24 Knit Pant

Lifecycle

January 2024 - December 2026

Sizes

XS - 2XL

RRP 60 CH



FD7677-451



FD7677-010

Features

- Nike Dri-FIT technology moves sweat away from your skin for quicker evaporation, helping you stay dry and comfortable.
- Standard fit for classic feel and comfort.
- Zippered pockets for secure storage.
- Lower ankle zipper allows for easy removal over cleats.
- 100% polyester





FD7679



Dri-Fit Academy Pro 24 Knit Pant (Kids)

Lifecycle

January 2024 - December 2026

Sizes

XS - XL

RRP 52 CH



FD7679-010



FD7679-451

Features

- Nike Dri-FIT technology moves sweat away from your skin for quicker evaporation, helping you stay dry and comfortable.
- Slim fit for tailored look and feel.
- Zippered pockets for secure storage.
- Lower ankle zipper allows for easy removal over cleats.
- 100% polyester



FD7600



Dri-Fit Academy Pro 24 Polo

Lifecycle

January 2024 - December 2026

Sizes

XS - 3XL

RRP 52 CH



FD7600-329



FD7600-657



FD7600-467



FD7600-455



FD7600-010

Features

- Nike Dri-FIT technology moves sweat from your skin for quicker
- evaporation—helping you stay dry and comfortable
- 100% polyester



FD7604



Dri-Fit Academy Pro 24 Polo (Kids)

Lifecycle

January 2024 - December 2026

Sizes

XS - XL

RRP 47 CH



FD7604-455



FD7604-010



FD7604-329



FD7604-657



FD7604-467

Features

- Nike Dri-FIT technology moves sweat from your skin for quicker
- evaporation—helping you stay dry and comfortable
- 100% polyester



DJ3363



Dri-Fit Academy Pro Track Suit (Little Kids)

Lifecycle

January 2022 - December 2026

Sizes

XS - XL

RRP 65 CH



DJ3363-010



DJ3363-013



DJ3363-329



DJ3363-451



DJ3363-463



DJ3363-635



DJ3363-657



Features

- A relaxed, easy fit works together with moisture-wicking fabric to help keep sweat off your skin when your training heats up.
- Dri-FIT technology moves sweat from your skin for quicker evaporation—helping you stay dry and comfortable.
- Zippered pockets let you secure your essentials.
- Standard fit for a relaxed, easy feel
- Machine wash
- 100% polyester





DH9484



Dri-Fit Academy Pro Training Kit (Little Kids)

Lifecycle

January 2022 - December 2026

Sizes

XS - XL

RRP 42 CH



DH9484-010



DH9484-013



DH9484-329



DH9484-451



DH9484-463



DH9484-635



DH9484-657



Features

- A relaxed, easy fit works together with moisture-wicking fabric to help keep sweat off your skin when your training heats up
- Nike Dri-FIT technology moves sweat away from your skin for quicker evaporation, helping you stay dry and comfortable
- Side pockets let you store small items
- Elastic drawcord provides a personalized fit
- Machine wash
- This product is made with 100% recycled polyester fibers





FD7709



Dri-Fit Academy Pro 24 Winter Jacket

Lifecycle

January 2024 - December 2026

Sizes

XS - 3XL

RRP 195 CH



FD7709-010



FD7709-451

Features

- Nike Dri-FIT technology moves sweat from your skin for quicker
- evaporation—helping you stay dry and comfortable
- 100% polyester





FD7712



Dri-Fit Women's Academy Pro 24 Winter Jacket

Lifecycle

January 2024 - December 2026

Sizes

XS - 2XL

RRP 195 CH



FD7712-010



FD7712-451

Features

- Nike Therma-FIT technology helps manage your body's natural heat to help keep you warm in cold-weather conditions.
- Loose fit for an oversized, roomy feel.
- A two-way zipper along the front helps to increase range of motion.
- Sleeve opening is an interior fleece lined cuff.
- Zippered pockets for secure storage.
- 100% polyester



FD7714



Dri-Fit Academy Pro 24 Winter Jacket (Kids)

Lifecycle

January 2024 - December 2026

Sizes

XS - XL

RRP 175 CH



FD7714-010



FD7714-451

Features

- Nike Dri-FIT technology moves sweat from your skin for quicker
- evaporation—helping you stay dry and comfortable
- 100% polyester



FD7702



Dri-Fit Academy Pro 24 Fall Jacket

Lifecycle

January 2024 - December 2026

Sizes

XS - 3XL

RRP 165 CH



FD7702-010



FD7702-451

Features

- The construction of the sleeves contributes to the efficiency of our patterns, reducing material waste
- Elasticized stitching along the bottom hem keeps the jacket closer to body and keep the heat in.
- Coral on the body and sleeves is a water repellent woven fabric, to keep you dry, while 200g down fill sheets within the baffles of the jacket keep you warm.
- This garment is made with 98% recycled materials.
- This style comes with zippered pockets for secure storage.
- Inside the sleeve opening is an interior fleece

lined cuff to keep athletes warm and comfortable in cold enviroments.

- 100% polyester



FD7704



Dri-Fit Women's Academy Pro 24 Fall Jacket

Lifecycle

January 2024 - December 2026

Sizes

XS - 2XL

RRP 165 CH



FD7704-010



FD7704-451

Features

- Nike Therma-FIT technology helps manage your body's natural heat to help keep you warm in cold-weather conditions.
- Loose fit for an oversized, roomy feel.
- Sleeve opening is an interior fleece lined cuff.
- Zippered pockets for secure storage.
- 100% polyester



FD7708



Dri-Fit Academy Pro 24 Fall Jacket (Kids)

Lifecycle

January 2024 - December 2026

Sizes

XS - XL

RRP 160 CH



FD7708-010



FD7708-451

Features

- The construction of the sleeves contributes to the efficiency of our patterns, reducing material waste
- Elasticized stitching along the bottom hem keeps the jacket closer to body and keep the heat in.
- Coral on the body and sleeves is a water repellent woven fabric, to keep you dry, while 200g down fill sheets within the baffles of the jacket keep you warm.
- This garment is made with 98% recycled materials.
- This style comes with zippered pockets for secure storage.
- Inside the sleeve opening is an interior fleece

- lined cuff to keep athletes warm and comfortable in cold enviroments.
- 100% polyester



FD7686



Dri-Fit Academy Pro 24 Rain Jacket

Lifecycle

January 2024 - December 2026

Sizes

XS - 3XL

RRP 100 CH



FD7686-010



FD7686-451

Features

- Nike Storm-FIT technology resists elements like wind and water to help keep you comfortable in harsh weather conditions.
- Standard fit for classic feel and comfort.
- Zippered pockets for secure storage.
- Fold over binding on the sleeve hem helps keep the water out.
- 100% polyester





FD7699



Women's Academy Pro 24 Rain Jacket

Lifecycle

January 2024 - December 2026

Sizes

XS - 2XL

RRP 100 CH



FD7699-010



FD7699-451

Features

- Nike Storm-FIT technology resists elements like wind and water to help keep you comfortable in harsh weather conditions.
- Standard fit for classic feel and comfort.
- Zippered pockets for secure storage.
- Fold over binding on the sleeve hem helps keep the water out.
- 100% polyester





FD7701



Dri-Fit Academy Pro 24 Rain Jacket (Kids)

Lifecycle

January 2024 - December 2026

Sizes

XS - XL

RRP 95 CH



FD7701-010



FD7701-451

Features

- Nike Storm-FIT technology resists elements like wind and water to help keep you comfortable in harsh weather conditions.
- Standard fit for classic feel and comfort.
- Zippered pockets for secure storage.
- Fold over binding on the sleeve hem helps keep the water out.
- 100% polyester



ACADEMY 25



FZ9754



Nike Academy 25 Men's Dri-FIT Football Short-Sleeve Top

Lifecycle

January 2025 - December 2027

Sizes

XS - 3XL

RRP 30 CH



FZ9754-010



FZ9754-012



FZ9754-100



FZ9754-329



FZ9754-410



FZ9754-657



FZ9754-719



FZ9754-463

Features

- Nike Dri-FIT technology moves sweat away from skin for quicker evaporation, helping athletes stay dry and comfortable.
- Slim fit for tailored look and feel.
- Wt (g/m2): 140.00
- Machine wash
- Imported
- 100% polyester



FZ9756



Nike Academy 25 Women's Dri-FIT Football Short-Sleeve Top

Lifecycle

January 2025 - December 2027

Sizes

XS - 2XL

RRP 30 CH



FZ9756-010



FZ9756-012



FZ9756-100



FZ9756-329



FZ9756-657



FZ9756-719



FZ9756-410



FZ9756-463

Features

- Nike Dri-FIT technology moves sweat away from skin for quicker evaporation, helping athletes stay dry and comfortable.
- New women's fit adds more space to the waist, allowing them to be at their best.
- Wt (g/m2): 140.00
- Machine wash
- Imported
- 100% polyester



FZ9758



Nike Academy 25 Big Kids' Dri-FIT Football Short-Sleeve Top

Lifecycle

January 2025 - December 2027

Sizes

XS - XL

RRP 25 CH



FZ9758-010



FZ9758-012



FZ9758-100



FZ9758-329



FZ9758-657



FZ9758-719



FZ9758-410



FZ9758-463

Features

- Nike Dri-FIT technology moves sweat away from skin for quicker evaporation, helping athletes stay dry and comfortable.
- 100% polyester



FZ9776



Nike Academy 25 Men's Nike Dri-FIT Football Knit Shorts

Lifecycle

January 2025 - December 2027

Sizes

Regular XS - 3XL | Tall S-T - 3XL-T

RRP 30 CH



FZ9776-010



FZ9776-410

Features

- Nike Dri-FIT technology moves sweat away from skin for quicker evaporation, helping athletes stay dry and comfortable.
- Slim fit for a tailored look and feel.
- Men’s inseam is 20cm.
- Wt (g/m2): 140.00
- Machine wash
- Imported
- 100% polyester



FZ9780



Nike Academy 25 Women's Nike Dri-FIT Football Knit Shorts

Lifecycle

January 2025 - December 2027

Sizes

XS - 2XL

RRP 30 CH



FZ9780-010



FZ9780-410

Features

- Nike Dri-FIT technology moves sweat away from skin for quicker evaporation, helping athletes stay dry and comfortable.
- Standard fit for a classic look and feel.
- Women's inseam is 12.5cm.
- Wt (g/m2): 140.00
- Machine wash
- Imported
- 100% polyester



FZ9784



Nike Academy 25 Big Kids' Nike Dri-FIT Football Knit Shorts

Lifecycle

January 2025 - December 2027

Sizes

XS - XL

RRP 25 CH



FZ9784-010



FZ9784-410

Features

- Nike Dri-FIT technology moves sweat away from skin for quicker evaporation, helping athletes stay dry and comfortable.
- Slim fit for a tailored look and feel.
- Big Kids' inseam grades by size from 17.7cm for a medium.
- Wt (g/m2): 140.00
- Machine wash
- Imported
- 100% polyester



FZ9767



Nike Academy 25 Men's Dri-FIT Football Drill Top

Lifecycle

January 2025 - December 2027

Sizes

XS - 3XL

RRP 52 CH



FZ9767-010



FZ9767-012



FZ9767-100



FZ9767-329



FZ9767-463



FZ9767-657



FZ9767-719



FZ9767-410

Features

- Nike Dri-FIT technology moves sweat away from skin for quicker evaporation, helping athletes stay dry and comfortable.
- Slim fit for tailored look and feel.
- Thumb loop at the end of sleeve opening.
- Wt (g/m2): 195.00
- Machine wash
- Imported
- 100% polyester



FZ9770



Nike Academy 25 Women's Dri-FIT Football Drill Top

Lifecycle

January 2025 - December 2027

Sizes

XS - 2XL

RRP 52 CH



FZ9770-010



FZ9770-100



FZ9770-410



FZ9770-463



FZ9770-657

Features

- Nike Dri-FIT technology moves sweat away from skin for quicker evaporation, helping athletes stay dry and comfortable.
- Standard fit for a classic look and feel.
- Thumb loop at the end of sleeve opening.
- Wt (g/m2): 195.00
- Machine wash
- Imported
- 100% polyester



FZ9773



Nike Academy 25 Big Kids' Dri-FIT Football Drill Top

Lifecycle

January 2025 - December 2027

Sizes

XS - XL

RRP 47 CH



FZ9773-010



FZ9773-012



FZ9773-100



FZ9773-329



FZ9773-410



FZ9773-657



FZ9773-719



FZ9773-463

Features

- Nike Dri-FIT technology moves sweat away from skin for quicker evaporation, helping athletes stay dry and comfortable.
- Slim fit for tailored look and feel.
- Thumb loop at the end of sleeve opening.
- Wt (g/m2): 195.00
- Machine wash
- Imported
- 100% polyester



FZ9824



Nike Dri-FIT Academy Men's Knit Football Track Jacket

Lifecycle

January 2025 - December 2027

Sizes

XS - 3XL

RRP 52 CH



FZ9824-010



FZ9824-012



FZ9824-100



FZ9824-329



FZ9824-657



FZ9824-719



FZ9824-410



FZ9824-463

Features

- Nike Dri-FIT technology moves sweat away from athletes' skin for quick evaporation, helping them stay dry and comfortable.
- Mesh at the shoulders, sleeves and sides adds breathability.
- Ribbed cuffs and hem help hold the jacket in place while players move.
- Full-zip design
- Zippered front pockets
- Embroidered Swoosh logo
- Machine wash
- Imported
- Body/Panels/Pocket Bags: 100% polyester. Rib: 97% polyester/3% spandex.



FZ9826



Nike Dri-FIT Academy Women's Knit Football Track Jacket

Lifecycle

January 2025 - December 2027

Sizes

XS - 2XL

RRP 52 CH



FZ9826-010



FZ9826-012



FZ9826-100



FZ9826-410



FZ9826-463



FZ9826-657

Features

- Nike Dri-FIT technology moves sweat away from athletes' skin for quick evaporation, helping them stay dry and comfortable.
- Mesh at the shoulders, sleeves and sides adds breathability.
- Ribbed cuffs and hem help hold the jacket in place while players move.
- Full-zip design
- Zippered front pockets
- Embroidered Swoosh logo
- Machine wash
- Imported
- Body/Panels/Pocket Bags: 100% polyester.
Rib: 97% polyester/3% spandex.



FZ9836



Nike Dri-FIT Academy Men's Knit Football Track Jacket

Lifecycle

January 2025 - December 2027

Sizes

XS - XL

RRP 50 CH



FZ9836-010



FZ9836-012



FZ9836-100



FZ9836-329



FZ9836-657



FZ9836-719



FZ9836-410



FZ9836-463

Features

- Nike Dri-FIT technology moves sweat away from athletes' skin for quick evaporation, helping them stay dry and comfortable.
- Mesh at the shoulders, sleeves and sides adds breathability.
- Ribbed cuffs and hem help hold the jacket in place while players move.
- Full-zip design
- Zippered front pockets
- Embroidered Swoosh logo
- Machine wash
- Imported
- Body/Panels/Pocket Bags: 100% polyester. Rib: 97% polyester/3% spandex.



FZ9837



Nike Academy 25 Men's Dri-FIT Football Woven Track Jacket

Lifecycle

January 2025 - December 2027

Sizes

XS - 3XL

RRP 52 CH



FZ9837-010



FZ9837-012



FZ9837-100



FZ9837-329



FZ9837-463



FZ9837-657



FZ9837-719



FZ9837-410

Features

- Nike Dri-FIT technology moves sweat away from skin for quicker evaporation, helping athletes stay dry and comfortable.
- Zippered pockets offer secure storage.
- Slim fit for a tailored look and feel.
- Wt (g/m2): 82.00
- Machine wash
- Imported
- 100% polyester



FZ9851



Nike Academy 25 Big Kids' Dri-FIT Football Woven Track Jacket

Lifecycle

January 2025 - December 2027

Sizes

XS - XL

RRP 47 CH



FZ9851-010



FZ9851-100



FZ9851-410



FZ9851-463



FZ9851-657

Features

- Nike Dri-FIT technology moves sweat away from skin for quicker evaporation, helping athletes stay dry and comfortable.
- Zippered pockets offer secure storage.
- Wt (g/m2): 82.00
- Machine wash
- 100% polyester
- 100% polyester



FZ9805



Nike Academy 25 Men's Dri-FIT Football Knit Pants

Lifecycle

January 2025 - December 2027

Sizes

Regular XS - 3XL | Tall S-T - 3XL-T

RRP 52 CH



FZ9805-010



FZ9805-410

Features

- Nike Dri-FIT technology moves sweat away from skin for quicker evaporation, helping athletes stay dry and comfortable.
- Slim fit for tailored look and feel.
- Zippered pockets for secure storage.
- Wt (g/m2): 195.00
- Machine wash
- Imported
- 100% polyester



FZ9814



Nike Academy 25 Women's Dri-FIT Football Knit Pants

Lifecycle

January 2025 - December 2027

Sizes

Regular XS - 2XL | Tall XS-T - 2XL-T

RRP 52 CH



FZ9814-010



FZ9814-410

Features

- Nike Dri-FIT technology moves sweat away from skin for quicker evaporation, helping athletes stay dry and comfortable.
- Standard fit for a classic look and feel.
- Zippered pockets for secure storage.
- Wt (g/m2): 195.00
- Machine wash
- Imported
- 100% polyester



FZ9816



Nike Academy 25 Big Kids' Dri-FIT Football Knit Pants

Lifecycle

January 2025 - December 2027

Sizes

XS - XL

RRP 47 CH



FZ9816-010



FZ9816-410

Features

- Nike Dri-FIT technology moves sweat away from skin for quicker evaporation, helping athletes stay dry and comfortable.
- Slim fit for tailored look and feel.
- Zippered pockets for secure storage.
- Wt (g/m2): 195.00
- Machine wash
- Imported
- 100% polyester



FZ9852



Nike Dri-FIT Academy Men's Woven Football Track Pants

Lifecycle

January 2025 - December 2027

Sizes

Regular XS - 3XL | Tall S-T - 3XL-T

RRP 52 CH



FZ9852-010



FZ9852-410

Features

- Nike Dri-FIT technology moves sweat away from your skin for quicker evaporation, helping you stay dry and comfortable.
- Mesh lining and side panels add breathability.
- Zippered front pockets
- Elastic waistband with drawcord
- Elastic cuffs
- Embroidered Swoosh design
- Machine wash
- Imported
- 100% polyester



FZ9857



Nike Dri-FIT Academy Kids Woven Football Track Pants

Lifecycle

January 2025 - December 2027

Sizes

XS - XL

RRP 47 CH



FZ9857-010



FZ9857-410

Features

- Nike Dri-FIT technology moves sweat away from your skin for quicker evaporation, helping you stay dry and comfortable.
- Mesh lining and side panels add breathability.
- Zippered front pockets
- Elastic waistband with drawcord
- Elastic cuffs
- Embroidered Swoosh design
- Machine wash
- Imported
- 100% polyester



FZ9787



Nike Academy 25 Men's Dri-FIT Football Knit Pants

Lifecycle

January 2025 - December 2027

Sizes

Regular XS - 3XL | Tall S-T - 3XL-T

RRP 42 CH



FZ9787-010



FZ9787-410

Features

- Nike Dri-FIT technology moves sweat away from skin for quicker evaporation, helping athletes stay dry and comfortable.
- Slim fit for tailored look and feel.
- Zippered pockets for secure storage.
- Wt (g/m2): 195.00
- Machine wash
- Imported
- 100% polyester



FZ9800



Nike Dri-FIT Academy Kids Woven Football Track Pants

Lifecycle

January 2025 - December 2027

Sizes

XS - XL

RRP 35 CH



FZ9800-010

Features

- Nike Dri-FIT technology moves sweat away from your skin for quicker evaporation, helping you stay dry and comfortable.
- Mesh lining and side panels add breathability.
- Zippered front pockets
- Elastic waistband with drawcord
- Elastic cuffs
- Embroidered Swoosh design
- Machine wash
- Imported
- 100% polyester



FZ9759



Nike Dri-FIT Academy 25 Men's Football Polo Shirt

Lifecycle

January 2025 - December 2027

Sizes

XS - 3XL

RRP 50 CH



FZ9759-010



FZ9759-012



FZ9759-100



FZ9759-329



FZ9759-463



FZ9759-657



FZ9759-719



FZ9759-410

Features

- Nike Dri-FIT technology moves sweat away from your skin for quicker evaporation, helping you stay dry and comfortable.
- Slim fit for a tailored look and feel.
- Machine wash
- Imported
- 100% polyester



FZ9761



Nike Dri-FIT Academy 25 Women's Football Polo Shirt

Lifecycle

January 2025 - December 2027

Sizes

XS - 2XL

RRP 50 CH



FZ9761-010



FZ9761-100



FZ9761-410



FZ9761-463



FZ9761-657

Features

- Nike Dri-FIT technology moves sweat away from your skin for quicker evaporation, helping you stay dry and comfortable.
- Slim fit for a tailored look and feel.
- Machine wash
- Imported
- 100% polyester



FZ9763



Nike Dri-FIT Academy 25 Kids Football Polo Shirt

Lifecycle

January 2025 - December 2027

Sizes

XS - XL

RRP 45 CH



FZ9763-010



FZ9763-100



FZ9763-410



FZ9763-657



FZ9763-463



FZ9763-012



FZ9763-329

Features

- Nike Dri-FIT technology moves sweat away from your skin for quicker evaporation, helping you stay dry and comfortable.
- Slim fit for a tailored look and feel.
- Machine wash
- Imported
- 100% polyester



FZ9858



Nike Academy 25 Men's Storm-FIT Football Rain Jacket

Lifecycle

January 2025 - December 2027

Sizes

XS - 3XL

RRP 82 CH



FZ9858-010



FZ9858-410

Features

- Nike Storm-FIT technology resists elements like wind and water to help keep athletes comfortable in harsh weather conditions.
- Zippered pockets offer secure storage.
- Slim fit for a tailored look and feel.
- Wt (g/m2): 88.00
- Machine wash
- Imported
- 100% polyester



FZ9860



Nike Academy 25 Women's Storm-FIT Football Rain Jacket

Lifecycle

January 2025 - December 2027

Sizes

XS - 2XL

RRP 82 CH



FZ9860-010



FZ9860-410

Features

- Nike Storm-FIT technology resists elements like wind and water to help keep athletes comfortable in harsh weather conditions.
- Zippered pockets offer secure storage.
- Standard fit for a classic look and feel.
- Wt (g/m2): 88.00
- Machine wash
- Imported
- 100% polyester



FZ9863



Nike Academy 25 Big Kids' Storm-FIT Football Rain Jacket

Lifecycle

January 2025 - December 2027

Sizes

XS - XL

RRP 77 CH



FZ9863-010



FZ9863-410

Features

- Nike Storm-FIT technology resists elements like wind and water to help keep athletes comfortable in harsh weather conditions.
- Zippered pockets offer secure storage.
- Slim fit for a tailored look and feel.
- Wt (g/m2): 88.00
- Machine wash
- Imported
- 100% polyester



PARK 20



BV6883



Dri-Fit Park 20 Top

Lifecycle

January 2020 - December 2025

Sizes

S - 2XL

RRP 25 CH



BV6883-010



BV6883-100



BV6883-302



BV6883-410



BV6883-463



BV6883-657



BV6883-719

Features

- Dri-FIT technology helps you stay dry, comfortable and focused.
- Slim fit for a tailored feel.
- Shoulder piping inspires a classic football look.
- This product is made with 100% recycled polyester fibers





BV6897



Dri-Fit Women's Dri-Fit Park SS Top

Lifecycle

January 2024 - December 2025

Sizes

XS - XL

RRP 25 CH



BV6897-100



BV6897-410



BV6897-463



BV6897-657



BV6897-010

Features

- Dri-FIT technology helps you stay dry, comfortable and focused.
- Shoulder piping inspires a classic football look.
- 100% Polyester





BV6905



Dri-Fit Park 20 Top (Youth)

Lifecycle

January 2020 - December 2025

Sizes

XS - XL

RRP 17 CH



BV6905-451



BV6905-463



BV6905-302



BV6905-657



BV6905-100



BV6905-010



BV6905-719

Features

- Dri-FIT technology helps you stay dry, comfortable and focused.
- Slim fit for a tailored feel.
- Shoulder piping inspires a classic football look.
- This product is made with 100% recycled polyester fibers





FJ3004



Dri-Fit Park 20 Crew Top

Lifecycle

January 2020 - December 2025

Sizes

S - 2XL

RRP 45 CH



FJ3004-010



FJ3004-657



FJ3004-100



FJ3004-302



FJ3004-451



FJ3004-463



FJ3004-719

Features

- Dri-FIT technology helps you stay dry, comfortable and focused.
- Standard fit for a relaxed, easy feel.
- Shoulder piping inspires a classic football look.
- 100% Polyester





FJ3006



Dri-Fit Women's Park 20 Crew Top

Lifecycle

January 2020 - December 2025

Sizes

XS - XL

RRP 45 CH



FJ3006-451



FJ3006-463



FJ3006-100



FJ3006-010



FJ3006-657

Features

- Nike Dri-FIT technology moves sweat from your skin for quicker
- evaporation—helping you stay dry and comfortable
- 100% polyester





FJ3008



Dri-Fit Park 20 Crew (Kids)

Lifecycle

January 2020 - December 2025

Sizes

XS - XL

RRP 40 CH



FJ3008-010



FJ3008-463



FJ3008-719



FJ3008-100



FJ3008-451



FJ3008-302



FJ3008-657

Features

- Dri-FIT technology helps you stay dry, comfortable and focused.
- Standard fit for a relaxed, easy feel.
- Shoulder piping inspires a classic football look.
- 100% Polyester





CW6152



Dri-Fit Park 20 Knit Short

Lifecycle

January 2020 - December 2025

Sizes

S - 2XL

RRP 32 CH



CW6152-010



CW6152-451

Features

- Dri-FIT technology helps keep you dry and comfortable.
- Zippered side pockets let you secure your essentials.
- Elastic waistband stretches for a secure fit.
- Standard fit for a relaxed, easy feel
- This product is made with 100% recycled polyester fibers





CW6154



Dri-Fit Women's Park 20 Knit Short

Lifecycle

January 2020 - December 2025

Sizes

XS - XL

RRP 32 CH



CW6154-010



CW6154-451

Features

- Dri-FIT technology helps keep you dry and comfortable.
- Elastic waistband and hidden drawcord give you a secure fit.
- Zippered pockets secure your everyday essentials.
- Standard fit for a relaxed, easy feel
- This product is made with 100% recycled polyester fibers





DB8244



Dri-Fit Park 20 Knit Short (Youth)

Lifecycle

January 2020 - December 2025

Sizes

XS - XL

RRP 27 CH



DB8244-010



DB8244-451

Features

- Dri-FIT technology helps keep you dry and comfortable.
- Zippered side pockets let you secure your essentials.
- Elastic waistband stretches for a secure fit.
- Standard fit for a relaxed, easy feel
- This product is made with 100% recycled polyester fibers





FJ3022



Dri-Fit Park 20 Knit Track Jacket

Lifecycle

January 2020 - December 2025

Sizes

S - 2XL

RRP 45 CH



FJ3022-463



FJ3022-100



FJ3022-302



FJ3022-719



FJ3022-451



FJ3022-010



FJ3022-657

Features

- Dri-FIT technology helps you stay dry and comfortable.
- Knit fabric feels soft and comfortable.
- Standard fit for a relaxed, easy feel.
- Side pockets with mesh lining help keep your belongings safe and dry.
- 100% Polyester





FJ3024



Dri-Fit Women's Park 20 Knit Track Jacket

Lifecycle

January 2020 - December 2025

Sizes

XS - XL

RRP 45 CH



FJ3024-657



FJ3024-463



FJ3024-010



FJ3024-100



FJ3024-451

Features

- Dri-FIT technology helps you stay dry and comfortable.
- Knit fabric feels soft and comfortable.
- Standard fit for a relaxed, easy feel.
- Side pockets with mesh lining help keep your belongings safe and dry.
- 100% Polyester



FJ3026



Dri-Fit Park 20 Knit Track Jacket (Kids)

Lifecycle

January 2020 - December 2025

Sizes

XS - XL

RRP 40 CH



FJ3026-010



FJ3026-463



FJ3026-100



FJ3026-451



FJ3026-302



FJ3026-719



FJ3026-657

Features

- Dri-FIT technology helps you stay dry and comfortable.
- Knit fabric feels soft and comfortable.
- Standard fit for a relaxed, easy feel.
- Side pockets with mesh lining help keep your belongings safe and dry.
- 100% Polyester



FJ3017



Dri-Fit Park 20 Knit Pant

Lifecycle

January 2020 - December 2025

Sizes

S - 2XL

RRP 40 CH



FJ3017-010



FJ3017-451

Features

- Dri-FIT technology helps keep you dry and comfortable
- Panels on the calves make it easy to change with boots.
- Side pockets hold you belongings.
- Standard fit for a relaxed, easy feel.
- Elastic waistband and drawcord.
- 100% Polyester





FJ3019



Dri-Fit Women's Park 20 Knit Pant

Lifecycle

January 2020 - December 2025

Sizes

XS - XL

RRP 40 CH



FJ3019-010



FJ3019-451

Features

- Dri-FIT technology helps keep you dry and comfortable
- Panels on the calves make it easy to change with boots.
- Side pockets hold you belongings.
- Standard fit for a relaxed, easy feel.
- Elastic waistband and drawcord.
- 100% Polyester



FJ3021



Dri-Fit Park 20 Knit Pant (Kids)

Lifecycle

January 2020 - December 2025

Sizes

XS - XL

RRP 32 CH



FJ3021-010



FJ3021-451

Features

- Dri-FIT technology helps keep you dry and comfortable
- Panels on the calves make it easy to change with boots.
- Side pockets hold you belongings.
- Standard fit for a relaxed, easy feel.
- Elastic waistband and drawcord.
- 100% Polyester





BV6879



Dri-Fit Park 20 Polo

Lifecycle

January 2020 - December 2025

Sizes

S - 2XL

RRP 32 CH



BV6879-010



BV6879-100



BV6879-302



BV6879-410



BV6879-463



BV6879-657



BV6879-719

Features

- Dri-FIT technology helps keep you dry and comfortable.
- Standard fit for a relaxed, easy feel.
- Fold-over collar with a two-button placket delivers timeless style.
- Shoulder piping inspires a classic football look.
- This product is made with 100% recycled polyester fibers





BV6893



Dri-Fit Women's Dri-Fit Park Polo

Lifecycle

January 2024 - December 2025

Sizes

XS - XL

RRP 32 CH



BV6893-010



BV6893-100



BV6893-463



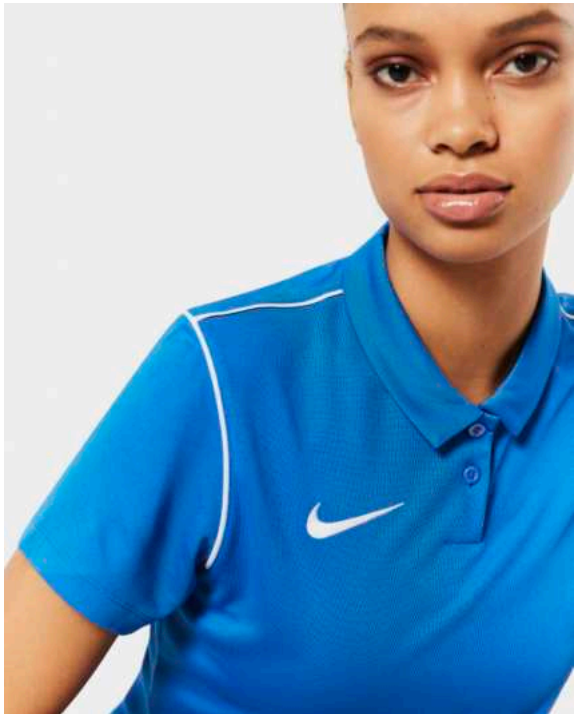
BV6893-657



BV6893-410

Features

- Dri-FIT technology helps keep you dry and comfortable.
- Fold-over collar with a two-button placket delivers timeless style.
- Shoulder piping inspires a classic football look.
- 100% Polyester





BV6903



Dri-Fit Park 20 Polo (Youth)

Lifecycle

January 2020 - December 2025

Sizes

XS - XL

RRP 27 CH



BV6903-010



BV6903-100



BV6903-302



BV6903-451



BV6903-463



BV6903-657



BV6903-719

Features

- Dri-FIT technology helps keep you dry and comfortable.
- Standard fit for a relaxed, easy feel
- Fold-over collar with a two-button placket delivers timeless style.
- Shoulder piping inspires a classic football look.
- This product is made with 100% recycled polyester fibers





CW6156



Park 20 Winter Jacket

Lifecycle

July 2022 - December 2025

Sizes

S - 3XL

RRP 155 CH



CW6156-010



CW6156-451

Features

- Water-repellent finish helps keep you dry when it starts to rain.
- Synthetic fill provides lightweight warmth.
- Elongated, full-zip design covers you from the elements.
- Loose fit for a roomy feel
- Snap-button pockets
- 100% Polyester





DC8036



Women's Park 20 Winter Jacket

Lifecycle

January 2021 - December 2025

Sizes

XS - XL

RRP 155 CH



DC8036-010



DC8036-451

Features

- Water-repellent finish helps you stay dry in light rain.
- Synthetic-fill insulation provides warmth without weighing you down.
- French terry lining at the hood, pockets and collar feels soft and warm.
- Loose fit and longer length cover you from the elements.
- Loose fit for a roomy feel
- Full-length zipper
- Snap pockets
- 100% Polyester





CW6158



Park 20 Winter Jacket (Youth)

Lifecycle

January 2021 - December 2025

Sizes

XS - XL

RRP 140 CH



CW6158-010



CW6158-451

Features

- Water-repellent finish helps keep you dry when it starts to rain.
- Synthetic fill provides lightweight warmth.
- Elongated, full-zip design covers you from the elements.
- Loose fit for a roomy feel
- Snap-button pockets
- 100% Polyester





CW6157



Therma-Fit Park 20 Fall Jacket

Lifecycle

January 2021 - December 2025

Sizes

S - 3XL

RRP 130 CH



CW6157-010



CW6157-451

Features

- Water-repellent fabric helps keep you dry when the elements turn.
- Elongated zipper hits above your chin for extra coverage.
- Elastic cuffs and hem help keep the jacket in place as you move.
- Snap pockets let you secure your essentials.
- Standard fit for a relaxed, easy feel
- Full zipper
- 100% Polyester





BV6877



Dri-Fit Park 20 Knit Pant

Lifecycle

January 2020 - December 2025

Sizes

S - 2XL

RRP 40 CH



BV6877-010



BV6877-410

Features

- Dri-FIT technology helps keep you dry and comfortable
- Panels on the calves make it easy to change with boots.
- Side pockets hold you belongings.
- Standard fit for a relaxed, easy feel.
- Elastic waistband and drawcord.
- 100% Polyester





DC8039



Therma-Fit Women's Park 20 Fall Jacket

Lifecycle

January 2021 - December 2025

Sizes

XS - XL

RRP 130 CH



DC8039-010



DC8039-451

Features

- Thermal fabric helps keep you warm.
- Water-repellent treatment helps keep you dry in light rain.
- Elastic cuffs and hem hold the jacket in place as you move.
- Snap pockets secure your everyday essentials.
- Standard fit for a relaxed, easy feel
- 100% Polyester





CW6159



Therma-Fit Park 20 Fall Jacket (Youth)

Lifecycle

January 2021 - December 2025

Sizes

XS - XL

RRP 120 CH



CW6159-010



CW6159-451



Features

- Water-repellent fabric helps keep you dry when the elements turn.
- Elongated zipper hits above your chin for extra coverage.
- Elastic cuffs and hem help keep the jacket in place as you move.
- Snap pockets let you secure your essentials.
- Loose fit for a roomy feel
- Full zipper
- 100% Polyester





BV6881



Park 20 Rain Jacket

Lifecycle

January 2020 - December 2025

Sizes

S - 2XL

RRP 52 CH



BV6881-010



BV6881-060



BV6881-302



BV6881-410



BV6881-463



BV6881-657



BV6881-719

Features

- Dri-FIT technology and water-repellant fabric help you stay dry in light rain.
- Side pockets with mesh lining help keep belongings safe and dry.
- Shoulder piping inspires a classic football look.
- This product is made with at least 75% recycled polyester fibers





BV6904



Park 20 Rain Jacket (Youth)

Lifecycle

January 2020 - December 2025

Sizes

XS - XL

RRP 47 CH



BV6904-010



BV6904-060



BV6904-302



BV6904-451



BV6904-463



BV6904-657



BV6904-719

Features

- Dri-FIT technology and water-repellant fabric help you stay dry in light rain.
- Side pockets with mesh lining help keep belongings safe and dry.
- Shoulder piping inspires a classic football look.
- This product is made with 100% recycled polyester fibers





Stay comfy on your way to the club
or when you root for your squad,
with staples you'll want to wear
again and again and again.

LIFESTYLE



FOOTBALL FAMILY



Football thrives on the moments that unfold beyond the pitch. It's the laughter echoing through the changing rooms, the fellowship built over post-match pints, and the shared anticipation as everyone arrives, clad in their team colors.

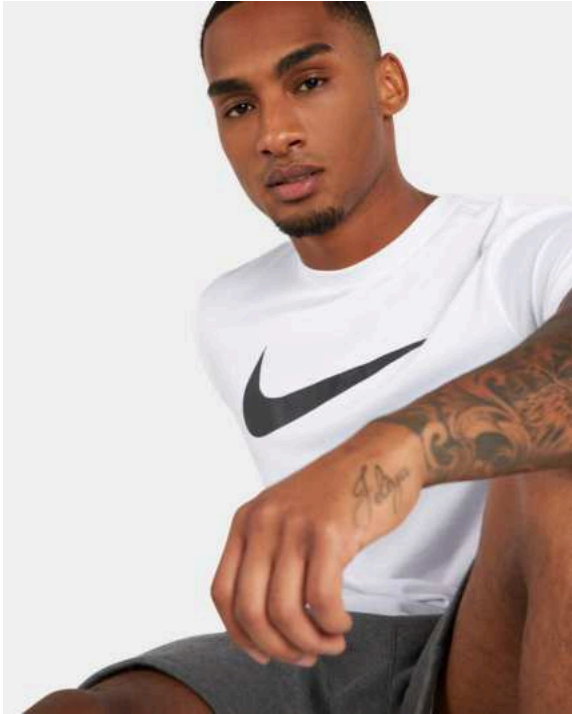


Whether you're heading to the field with your football fellows or swapping stories of past glories and future dreams, lifestyle is woven with friendship and passion. Every training session brings an opportunity to connect and support one another, fostering bonds that go beyond the game.

From warm-ups to post-match discussions, each moment creates lasting connections that extend far beyond the final score. In the end, it's the community, the shared experiences, and the commitment to football that truly define this lifestyle. Your teammates are more than just a squad—they're family.



CW6936



Dri-Fit Park 20 Tee

Lifecycle

January 2021 - December 2025

Sizes

S - 3XL

RRP 42 CH



CW6936-010



CW6936-100



CW6936-451



CW6936-657



CW6936-463

Features

- The Nike Dri-FIT Park T-Shirt is made of soft, sweat-wicking fabric to help keep you comfortable during training or competition.
- Nike Dri-FIT technology helps you stay dry and comfortable.
- Lightweight fabric feels soft and slightly stretchy.
- Standard fit for a relaxed, easy feel
- 75% Polyester/13% Cotton/12% Rayon





CW6967



Dri-Fit Women's Park 20 Tee

Lifecycle

January 2021 - December 2025

Sizes

XS - XL

RRP 42 CH



CW6967-010



CW6967-100



CW6967-451



CW6967-657

Features

- Dri-FIT technology helps you stay dry and comfortable.
- Lightweight fabric feels soft and slightly stretchy.
- Standard fit for a relaxed, easy feel
- 75% Polyester/13% Cotton/12% Rayon





CW6941



Dri-Fit Park 20 Tee (Youth)

Lifecycle

January 2021 - December 2025

Sizes

XS - XL

RRP 32 CH



CW6941-010



CW6941-100



CW6941-451



CW6941-657



CW6941-463

Features

- The Nike Dri-FIT Park T-Shirt is made of soft, sweat-wicking fabric to help keep you comfortable during training or competition.
- Nike Dri-FIT technology helps you stay dry and comfortable.
- Lightweight fabric feels soft and slightly stretchy.
- Standard fit for a relaxed, easy feel
- Ribbed collar
- 57% Cotton/43% Polyester





CW6952



Dri-Fit Park 20 Tee

Lifecycle

January 2021 - December 2025

Sizes

S - 3XL

RRP 32 CH



CW6952-010



CW6952-071



CW6952-100

Features

- The Nike Dri-FIT Park T-Shirt is made of soft, sweat-wicking fabric to help keep you comfortable during training or competition.
- Nike Dri-FIT technology helps you stay dry and comfortable.
- Lightweight fabric feels soft and slightly stretchy.
- Standard fit for a relaxed, easy feel
- Ribbed collar
- 57% Cotton/43% Polyester





CZ0881



Park 20 Tee

Lifecycle

January 2021 - December 2025

Sizes

S - 3XL

RRP 27 CH



CZ0881-010



CZ0881-071



CZ0881-100



CZ0881-302



CZ0881-451



CZ0881-463



CZ0881-657



CZ0881-719

Features

- Standard fit for a relaxed, easy feel
- Ribbed collar
- 100% Cotton





CZ0903



Women's Park 20 Tee

Lifecycle

January 2021 - December 2025

Sizes

XS - XL

RRP 27 CH



CZ0903-010



CZ0903-071



CZ0903-100



CZ0903-302



CZ0903-451



CZ0903-463



CZ0903-657



CZ0903-719

Features

- Standard fit for a relaxed, easy feel
- Ribbed collar
- 100% Cotton



CZ0909



Park 20 Tee (Youth)

Lifecycle

January 2021 - December 2025

Sizes

XS - XL

RRP 22 CH



CZ0909-010



CZ0909-071



CZ0909-100



CZ0909-302



CZ0909-451



CZ0909-463



CZ0909-657



CZ0909-719

Features

- Standard fit for a relaxed, easy feel
- Ribbed collar
- 100% Cotton





CW6887



Park 20 Full-Zip-Hoodie

Lifecycle

January 2021 - December 2025

Sizes

S - 3XL

RRP 77 CH



CW6887-010



CW6887-063



CW6887-071



CW6887-451



CW6887-657

Features

- Fleece fabric feels soft and warm.
- Drawcord lets you wear the hood loose or cinch out the cold.
- Standard fit for a relaxed, easy feel
- Full-length zipper
- Side Pockets
- Body: 82% Cotton/18% Polyester. Hood lining: 100% Cotton.





CW6955



Dri-Fit Women's Park 20 Full-Zip Hoodie

Lifecycle

January 2021 - December 2025

Sizes

XS - XL

RRP 77 CH



CW6955-010



CW6955-063



CW6955-071



CW6955-451



CW6955-657

Features

- Fleece fabric feels soft and warm.
- Large hood with drawcord lets you wear the hood loose or cinch out the cold.
- Standard fit for a relaxed, easy feel
- Side pockets
- Body: 80% Cotton/20% Polyester. Hood lining: 100% Cotton.



CW6891



Park 20 Full-Zip-Hoodie (Youth)

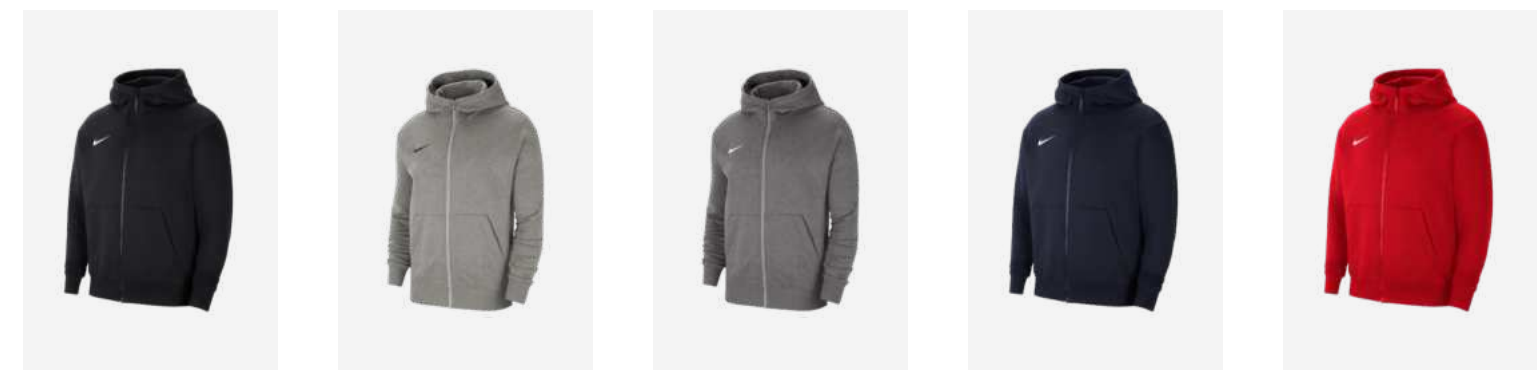
Lifecycle

January 2021 - December 2025

Sizes

XS - XL

RRP 65 CH



CW6891-010 CW6891-063 CW6891-071 CW6891-451 CW6891-657

Features

- Fleece fabric feels soft and warm.
- Ribbed cuffs and hem help hold the hoodie in place.
- Standard fit for a relaxed, easy feel
- Side pockets
- Body: 82% Cotton/18% Polyester. Hood lining: 100% Cotton.



CW6894



Park 20 Hoodie

Lifecycle

January 2021 - December 2025

Sizes

S - 3XL

RRP 70 CH



CW6894-010



CW6894-071



CW6894-101



CW6894-302



CW6894-451



CW6894-463



CW6894-657



CW6894-719

Features

- Fleece fabric feels soft and warm.
- Drawcord hood lets you adjust your coverage.
- Standard fit for a relaxed, easy feel
- Front pocket
- Body: 82% Cotton/18% Polyester. Hood lining: 100% Cotton.



CW6896



Park 20 Hoodie (Youth)

Lifecycle
January 2021 - December 2025

Sizes
XS - XL

RRP 60 CH



CW6896-010



CW6896-071



CW6896-101



CW6896-302



CW6896-451



CW6896-463



CW6896-657



CW6896-719

Features

- Fleece fabric feels soft and warm.
 - Ribbed cuffs and hem help hold the hoodie in place.
- Standard fit for a relaxed, easy feel
 - Front pocket
 - Body: 82% Cotton/18% Polyester. Hood
- 100% Cotton.



CW6904



Dri-Fit Park 20 Crewneck (Youth)

Lifecycle

January 2021 - December 2025

Sizes

XS - XL

RRP 52 CH



CW6904-010



CW6904-071



CW6904-451

Features

- Fleece fabric feels soft and warm.
- Ribbed cuffs and hem help keep the top in place as you move.
- Standard fit for a relaxed, easy feel
- 82% Cotton/18% Polyester





CW6907



Park 20 Pant

Lifecycle

January 2021 - December 2025

Sizes

S - 2XL

RRP 60 CH



CW6907-010



CW6907-063



CW6907-071



CW6907-451



Features

- Standard fit for a relaxed, easy feel
- Elastic waistband
- Zippered pockets
- Cuffed ankles
- Body: 82% Cotton/18% Polyester. Pocket bags: 100% Polyester.





CW6961



Women's Park 20 Pant

Lifecycle

January 2021 - December 2025

Sizes

XS - XL

RRP 60 CH



CW6961-010



CW6961-063



CW6961-071



CW6961-451

Features

- Fleece fabric feels soft and warm.
- Drawcord waistband lets you adjust the fit.
- Zippered pockets secure your everyday essentials.
- Standard fit for a relaxed, easy feel
- Body: 80% Cotton/20% Polyester. Pocket bags: 100% Cotton.





CW6909



Park 20 Pant (Youth)

Lifecycle

January 2021 - December 2025

Sizes

XS - XL

RRP 52 CH



CW6909-010



CW6909-063



CW6909-071



CW6909-451

Features

- Fleece fabric feels soft and warm.
- Drawcord waistband lets you adjust the fit.
- Zippered pockets secure your everyday essentials.
- Standard fit for a relaxed, easy feel
- Body: 82% Cotton/18% Polyester. Pocket bags: 100% Polyester.





CW6910



Park 20 Short

Lifecycle

January 2021 - December 2025

Sizes

S - 2XL

RRP 52 CH



CW6910-010



CW6910-063



CW6910-071



CW6910-451

Features

- Fleece fabric feels soft and warm.
- Drawcord waistband lets you adjust the fit.
- Zippered pockets secure your everyday essentials.
- Loose fit for a roomy feel
- Body: 82% Cotton/18% Polyester. Pocket bags: 100% Polyester.



CW6963



Women's Park 20 Short

Lifecycle

January 2021 - December 2025

Sizes

XS - XL

RRP 52 CH



CW6963-010



CW6963-063



CW6963-071



CW6963-451

Features

- Fleece fabric feels soft and warm.
- Drawcord waistband lets you adjust the fit.
- Zippered pockets secure your everyday essentials.
- Loose fit for a roomy feel
- Body: 82% Cotton/18% Polyester. Pocket bags: 100% Polyester.





FD7734



Men's Dri-Fit Standard Issue Fleece Short

Lifecycle

July 2024 - December 2025

Sizes

XS - 3XL

RRP 100 CH



FD7734-463



FD7734-100



FD7734-451



FD7734-010



FD7734-012



FD7734-657

Features

- Dri-FIT technology helps you stay dry, comfortable & focused
- 54% Polyester/46% Cotton



FD7738



Men's Dri-Fit Standard Issue Pull Over Hoodie

Lifecycle

July 2024 - December 2025

Sizes

XS - 3XL

RRP 87 CH



FD7738-657



FD7738-010



FD7738-463



FD7738-012



FD7738-451

Features

- Dri-FIT technology helps you stay dry, comfortable & focused
- 54% Polyester/46% Cotton



FD7748



Men's Dri-Fit Standard Issue Taper Pant

Lifecycle

July 2024 - December 2025

Sizes

XS - 3XL

RRP 65 CH



FD7748-463



FD7748-012



FD7748-657



FD7748-010



FD7748-451

Features

- Dri-FIT technology helps you stay dry, comfortable & focused
- 54% Polyester/46% Cotton



FD7727



Nike Dri-FIT Anthem 24 Men's Football Jacket

Lifecycle

January 2025 - September 2025

Sizes

XS - 3XL

RRP 100 CH



FD7727-010



FD7727-012



FD7727-457



FD7727-657

Features

- Nike Dri-FIT technology moves sweat away from your skin for quicker evaporation, helping you stay dry and comfortable.
- Loose fit for an oversized, roomy feel
- Zippered pockets for secure storage.
- Machine wash
- Imported
- 100% polyester



EQUIPMENT



EQUIPMENT

01.

P.222

BALLS
02.

P.230

BAGS
03.

P.241

GLOVES
04.

P.243

PROTECTIVE

05.

P.250

SOCKS
06.

P.251

BIBS
07.

P.252

BEANIE



FZ3023

Equipment

Catalogue 2025

niketeamfootball.com



Nike Flight Soccer Ball

Lifecycle

January 2025 - June 2025

Sizes

5

RRP 165 CH



FZ3023-100

Features

- Nike Aerowsculpt technology uses molded grooves to disrupt airflow across the ball for less drag and more stable flight.
- Four fused panels create a larger sweet spot for powerful strikes.
- All Conditions Control (ACC) technology adds a grippy texture in both wet and dry conditions.
- Spot clean
- Imported
- 37% polyurethane (PU)/33% rubber/20% polyester/10% cotton



FZ7544

Equipment

Catalogue 2025

niketeamfootball.com

Club Elite Team Ball (Fifa Basic)

Lifecycle

July 2024 - March 2025

Sizes

ONE SIZE

RRP 70 CH



FZ7544-100

Features

- Nike Aerowsculpt technology uses molded grooves for more consistent flight
- Textured casing gives you great touch and feel
- Rubber bladder helps maintain air pressure and shape
- 12-panel design





FZ2979



Academy Plus Ball IMS

Lifecycle

July 2024 - March 2025

Sizes

4 - 5

RRP 45 CH



FZ2979-100

Features

- Nike Aerowsculpt technology uses molded grooves to disrupt airflow across the ball for less drag and more stable flight.
- Rubber bladder helps maintain air pressure and shape.
- Textured casing has a consistent touch when passing, shooting and dribbling.
- 12-panel design provides true and accurate ball flight.



FZ7540

Equipment

Catalogue 2025

niketeamfootball.com

Academy Team Ball IMS

Lifecycle

July 2024 - December 2025

Sizes

3 - 5

RRP 30 CH



FZ7540-101



FZ7540-710



FZ7540-100



FZ7540-102

Features

- Nike Aerowsculpt technology uses molded grooves for more consistent flight
- Textured casing gives you great touch and feel
- Reinforced rubber bladder helps maintain air pressure and shape





FZ7557

Equipment

Catalogue 2025

niketeamfootball.com

Strike Team Ball 290gr

Lifecycle

July 2024 - March 2025

Sizes

4 - 5

RRP 30 CH



FZ7557-100

Features

- Nike Aerow Trac grooves allow consistent spin when the ball is in the air.
- Textured casing has a consistent touch when passing, shooting and dribbling.
- Machine-stitched casing optimizes shape, feel and durability.
- Rubber bladder helps maintain air pressure and shape.





FZ7551



Park Team Ball 2.0

Lifecycle

July 2024 - March 2025

Sizes

3 - 5

RRP 25 CH



FZ7551-765



FZ7551-100



FZ7551-803

Features

- 12-panel design
- Durable design helps maintain air pressure and shape
- Textured surface has a consistent touch
- Designed for easy tracking across the pitch



FZ7553



Pitch Team Ball

Lifecycle

July 2024 - March 2025

Sizes

3 - 5

RRP 25 CH



FZ7553-359



FZ7553-100



FZ7553-635



FZ7553-486

Features

- Smooth, durable casing has a consistent feel
- Rubber bladder helps maintain air pressure and shape



DH1992

Equipment

Catalogue 2025

niketeamfootball.com

Nike Futsal Pro Soccer Ball

Lifecycle

January 2025 - September 2025

Sizes

PRO

RRP 45 CH



DH1992-100

Features

- Textured surface gives you great touch and feel.
- Hand-sewn construction means tighter seams for durability.
- Official Futsal size and weight
- Imported
- 60% rubber/15% polyurethane/13% polyester/12% EVA





BA5199

Equipment

Catalogue 2025

niketeamfootball.com

Nike Club Team Roller Bag

Lifecycle

January 2019 - March 2025

Sizes

ONE SIZE

RRP 77 CH



BA5199-010

Features

- Adjustable handle and wheels for easier hauling.
- Zippered main compartment provides secure storage.
- Grab handle on the side gives an alternative carrying option
- 82L x 35W x 38H cm /120L
- 100% Polyester





CU8087



Academy Team L Hardcase

Lifecycle

January 2021 - March 2025

Sizes

L

RRP 65 CH



CU8087-010



CU8087-410



CU8087-657



Features

- Main body compartment offers spacious storage.
- Hard bottom helps keep items safe from bumps and scrapes.
- Zippered wet/dry compartment at the bottom keeps things clean and organized.
- Handles can attach together for an alternate carrying option.
- 64L x 31W x 30H cm/ 59L
- 100% Polyester





CU8096



Academy Team M Hardcase

Lifecycle

January 2021 - March 2025

Sizes

M

RRP 57 CH



CU8096-010



CU8096-410



CU8096-657

Features

- Main body compartment offers spacious storage.
- Hard bottom helps keep items safe from bumps and scrapes.
- Zippered wet/dry compartment at the bottom keeps gear clean and organized.
- Handles can attach together for an alternate carrying option.
- 53L x 30W x 27H cm/ 37L
- 100% Polyester





DV0761



Academy Team Backpack

Lifecycle

January 2023 - March 2025

Sizes

ONE SIZE

RRP 50 CH



DV0761-011



DV0761-657



DV0761-410

Features

- 19"H X 13"W X 7"D
- Nike Storm-FIT technology resists elements like wind and water to help keep you comfortable in harsh weather conditions
- Rain fly provides weather coverage, and features a jock tag to easily identify your bag
- A side pocket with velcro closure houses the Storm-FIT rainfly
- Enlarged tech pocket provides space for the latest technology
- Padded shoulder straps are adjustable for a comfortable fit
- Zipper pulls have been updated to make access easier in all conditions
- Mesh has been updated for enhanced ventilation
- Spot clean
- Body: 58% polyester/42% nylon. Lining: 100% polyester





CU8089



Academy Team L Duffel Bag

Lifecycle

January 2021 - March 2025

Sizes

L

RRP 50 CH



CU8089-010



CU8089-410



CU8089-657



Features

- Large main compartment is spacious enough for your ball and more.
- Zippered wet/dry compartment at the bottom helps keep things clean and organized.
- Hand and shoulder straps let you carry your gear comfortably.
- Small interior pocket and zippered exterior pockets hold small valuables.
- 70L x 36W x 35H cm / 95L
- 100% Polyester



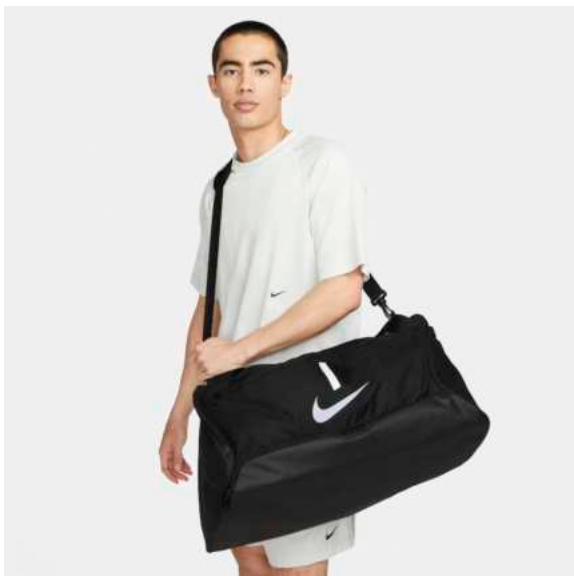


CU8090

Equipment

Catalogue 2025

niketeamfootball.com



Academy Team M Duffel Bag

Lifecycle

January 2021 - March 2025

Sizes

M

RRP 45 CH



CU8090-010



CU8090-410



CU8090-657

Features

- Main compartment is spacious enough for your ball and more.
- Zippered wet/dry compartment at the bottom helps keep things clean and organized
- Hand and shoulder straps let you carry your gear comfortably.
- Small interior pocket and zippered exterior pockets hold small valuables.
- 64L x 30W x 31H cm / 60L
- 100% Polyester





CU8097

Equipment

Catalogue 2025

niketeamfootball.com

Academy Team S Duffel Bag

Lifecycle

January 2021 - March 2025

Sizes

S

RRP 40 CH



CU8097-010



CU8097-410



CU8097-657



Features

- Zippered main compartment offers spacious storage.
- Separate wet/dry compartment helps keep things clean and organized.
- Hand and shoulder straps let you carry your gear comfortably.
- Small interior pocket and zippered exterior pockets hold small valuables.
- 53L x 26W x 28H cm / 41L
- 100% Polyester





DA2571

Equipment

Catalogue 2025

niketeamfootball.com



Academy Team Backpack (Youth)

Lifecycle

January 2021 - March 2025

Sizes

ONE SIZE

RRP 40 CH



DA2571-010



DA2571-411



DA2571-657

Features

- Wet/dry compartment helps keep things clean and organized.
- Curved shoulder straps and back panel are padded for extra comfort.
- Back pocket features a felt interior to safely store your phone or keys.
- Mesh pocket on the side is designed to hold a water bottle.
- Front pocket is large enough to fit a soccer ball.
- Internal sleeve safely stores up to a 15" laptop.
- 45H x 30W x 13D cm/ 22L
- 100% Polyester





BA5200

Equipment

Catalogue 2025

niketeamfootball.com



Nike Club Team Ball Bag

Lifecycle

January 2019 - March 2025

Sizes

ONE SIZE

RRP 32 CH



BA5200-010



Features

- Adjustable shoulder straps are padded for comfortable carrying.
- Drawcord closure lets you quickly access your gear.
- Lightweight mesh promotes ventilation.
- 86L x 44H x 44W cm / 160L
- Lining: 100% Polyester. Body: 88% Polyester/ 12% Nylon.





DC2648



Academy Shoe bag

Lifecycle

January 2024 - March 2025

Sizes

ONE SIZE

RRP 30 CH



DC2648-010

Features

- 2 zippered pockets for easy access to your cleats and essentials.
- Durable material stands up to everyday use.
- Haul loop at the side makes for convenient carrying.
- Body: 100% Polyester; Lining: 100% Polyester



DA5435

Equipment

Catalogue 2025

niketeamfootball.com



Academy Football Gymsack

Lifecycle

January 2021 - March 2025

Sizes

ONE SIZE

RRP 27 CH



DA5435-010



Features

- Woven fabric is lightweight and durable.
- Main compartment cinches closed for easy access to your gear.
- Mesh at the bottom allows ventilation.
- Zippered pouch on the front keeps your essentials within reach.
- 50H x 36W x 6D cm / 18L
- 100% Polyester





HF0546

Equipment

Catalogue 2025

niketeamfootball.com

Nike Academy Therma-FIT Football Gloves

Lifecycle

January 2025 - June 2026

Sizes

S - XL

RRP 35 CH



HF0546-010



HF0546-011

Features

- Nike Therma-FIT technology helps manage your body's natural heat to help keep you warm in cold-weather conditions.
- Flexible cuffs stretch to help provide a secure fit.
- Hand wash
- Imported
- 62% polyester/28% nylon/5% rubber/5% spandex





HF0547

Equipment

Catalogue 2025

niketeamfootball.com

Nike Academy Big Kids' Therma-FIT Football Gloves

Lifecycle

January 2025 - June 2026

Sizes

S - L

RRP 30 CH



HF0547-011

Features

- Nike Therma-FIT technology helps manage your body's natural heat to help keep you warm in cold-weather conditions.
- Textured palms help you grip better.
- Not intended for use as Personal Protective Equipment (PPE)
- Hand wash
- Imported
- 62% polyester/28% nylon/5% rubber/5% spandex62% polyester/28% nylon/5% rubber/ 5% spandex





DN3611

Equipment

Catalogue 2025

niketeamfootball.com

Nike Mercurial Lite Football Shin Guards



Lifecycle

January 2025 - September 2026

Sizes

XS - XL

RRP 40 CH



DN3611-010



DN3611-100

Features

- Low-profile shell is lightweight and durable.
- Soft, perforated foam helps cushion against impact.
- Stretchy sleeves help hold the guards in place and use Dri-FIT technology to wick sweat away.
- NOCSAE certified
- Hand wash
- Imported
- Sleeve: 65% polyester/19% rubber/16% spandex. Shell: 72% K resin/28% EVA.





DX4608



Nike Charge Football Shin Guards

Lifecycle

January 2025 - September 2026

Sizes

S - XL

RRP 30 CH



DX4608-010



DX4608-100

Features

- Hand wash
- Imported
- 43% polypropylene (PP)/33% ethylene vinyl acetate (EVA)/17% polyester/7% rubber



DX4610

Equipment

Catalogue 2025

niketeamfootball.com

Nike Charge Kids' Football Shin Guards

Lifecycle

January 2025 - September 2026

Sizes

S - L

RRP 27 CH



DX4610-010



DX4610-100

Features

- Hand wash
- Imported
- 43% polypropylene (PP)/33% ethylene vinyl acetate (EVA)/17% polyester/7% rubber





SE0173

Equipment

Catalogue 2025

niketeamfootball.com

Nike Guard Lock Elite Football Sleeves

Lifecycle

January 2025 - June 2026

Sizes

XS - XL

RRP 22 CH



SE0173-011



SE0173-103

Features

- Stretchy material offers a personalized fit.
- Anatomical, left-right-specific fit gives a natural feel.
- Silicone-lined elastic cuffs add grip.
- Machine wash
- Imported
- 59% polyester/25% rubber/13% spandex/3% polyurethane





SP2162



Nike J Guard-CE Football Shin Guards

Lifecycle

January 2025 - June 2026

Sizes

XS - L

RRP 17 CH



SP2162-010



SP2162-100

Features

- Contoured shell is lightweight and durable.
- Dense foam helps cushion against impact.
- Stretchy straps help keep your shin guards in place.
- Left/right specific fit
- CE/NOCSAE certified
- Hand wash
- Imported
- Strap: 56% polyester/38% rubber/6% nylon.
Shell: 87% polyethylene/13% EVA.





SE0174

Equipment

Catalogue 2025

niketeamfootball.com

Nike Guard Lock Football Sleeves

Lifecycle

January 2025 - June 2026

Sizes

XS - XL

RRP 15 CH



SE0174-011



SE0174-103

Features

- Stretchy material moves with you.
- Elastic cuff is lined with silicone to increase grip.
- Textured internal material helps keep the sleeves in place.
- Hand wash
- Imported
- 65% polyester/19% rubber/16% spandex





SE0047

Equipment

Catalogue 2025

niketeamfootball.com

Nike Guard Stay 2 Football Sleeve

Lifecycle

January 2025 - June 2026

Sizes

1SIZE

RRP 15 CH



SE0047-001



SE0047-101



SE0047-401



SE0047-498



SE0047-610

Features

- Soft elastic stretches for a supportive feel.
- Hook-and-loop closure lets you easily take the sleeves on and off.
- Designed to be worn at or below the shin guard for a secure fit.
- Hand wash
- Imported
- 43% polyester/30% nylon/27% rubber





FZ8485

Equipment

Catalogue 2025

niketeamfootball.com

Dri-Fit Strike Team Crew Sock

Lifecycle

January 2024 - December 2025

Sizes

XS - XL

RRP 15 CH



FZ8485-100



FZ8485-010



FZ8485-410



FZ8485-657



FZ8485-463

Features

- Nike Dri-FIT technology moves sweat away from your skin for quicker evaporation, helping you stay dry and comfortable.
- Cushioning in high-wear areas helps absorb impact as you run.



DV7425



Training Bib

Lifecycle

January 2021 - December 2025

Sizes

S - 2XL

RRP 12 CH



DV7425-100



DV7425-313



DV7425-406



DV7425-616



DV7425-702

Features

- Dri-FIT technology helps keep you dry and comfortable.
- Mesh fabric feels lightweight and breathable.
- Standard fit for a relaxed, easy feel.
- 1 unit
- This product is made with 100% recycled polyester fibers





FQ8292

Equipment

Catalogue 2025

niketeamfootball.com



Dri-Fit Peak Beanie

Lifecycle

January 2024 - December 2025

Sizes

ONE SIZE

RRP 30 CH



FQ8292-451



FQ8292-010



FQ8292-060

Features

- Soft knit yarns feel stretchy, plush and warm.
- Cuffed design provides versatility and lets you wear it how you like.
- 80% Polyester/20% Elastane



Ready referee? Stay cool and calm with the Nike referee collection. With plenty of room for cards, pens, and your notebook.

REFEREE



LOOKING OUT FOR THE PLAYERS



Under the Sunday sun, a vital presence patrols the field. Standing alone with the whistle in his hand, he embodies the essence of the game. Through the chaos that unfolds, he holds the line, witnessing the raw energy of players—the highs of victory and the lows of defeat.

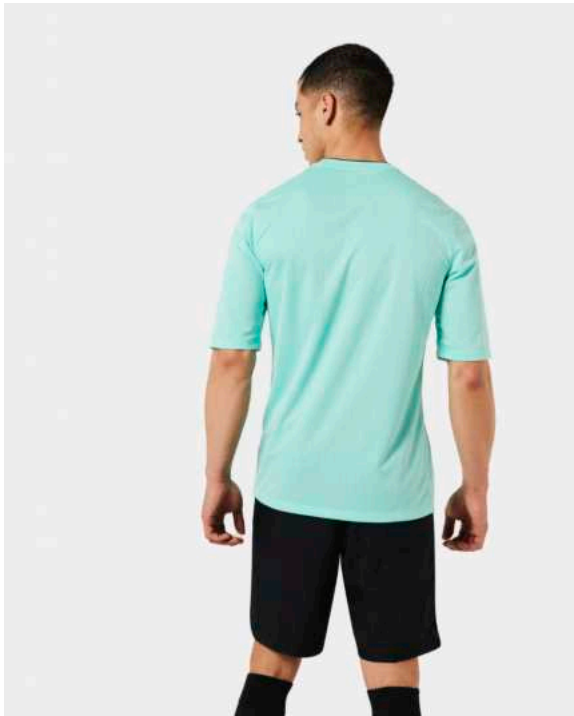


As cheers and jeers ring out around him, he knows the truth: some will love him, while others will hate. Yet, he remains steadfast, keeping the flow and dictating the fate. Delivering justice with every call and every decision, he ensures the match stays fair, true and real.

In moments of tension, when tempers flare and the stakes are high, his integrity holds everything together. He earns the respect for his unshakable presence. Each foul and every fight reminds us that he is the backbone of the day. So here's to the whistle, the referee.



DH8024



Dri-Fit Referee II Jersey S/S

Lifecycle

January 2024 - December 2025

Sizes

XS - 2XL

RRP 65 CH



DH8024-010



DH8024-702



DH8024-645



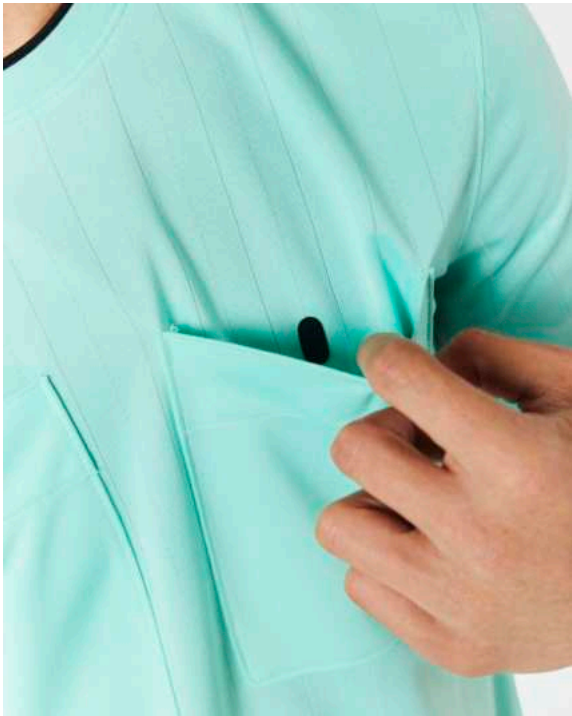
DH8024-354



DH8024-635

Features

- Nike Dri-FIT technology moves sweat away from your skin for quicker evaporation, helping you stay dry and comfortable.
- Pockets with hook-and loop closures let you keep your essentials secure on the field.
- 100% polyester





DH8027



Dri-Fit Referee II Jersey L/S

Lifecycle

April 2022 - December 2025

Sizes

XS - 2XL

RRP 70 CH



DH8027-010



DH8027-702



DH8027-635



DH8027-645



DH8027-354

Features

- Nike Dri-FIT technology moves sweat away from your skin for quicker evaporation, helping you stay dry and comfortable.
- Pockets with hook-and loop closures let you keep your essentials secure on the field.
- 100% polyester





FV3328



Nike Dri-FIT Long-Sleeve Women's Referee Jersey II

Lifecycle

January 2025 - September 2025

Sizes

XS - 2XL

RRP 70 CH



FV3328-010



FV3328-354



FV3328-635



FV3328-645



FV3328-702

Features

- Nike Dri-FIT technology moves sweat away from your skin for quicker evaporation, helping you stay dry and comfortable.
- 2 pockets on the chest.
- Standard fit for a classic look and feel.
- Machine wash
- Imported
- 100% polyester



FV3357



Nike Dri-FIT Women's Referee Jersey II

Lifecycle

January 2025 - September 2025

Sizes

XS - 2XL

RRP 65 CH



FV3357-010



FV3357-354



FV3357-635



FV3357-645



FV3357-702

Features

- Nike Dri-FIT technology moves sweat away from your skin for quicker evaporation, helping you stay dry and comfortable.
- 2 pockets on the chest.
- Standard fit for a classic look and feel.
- Machine wash
- Imported
- 100% polyester



AA0737



Dri-Fit Nike Dry Referee Short

Lifecycle

June 2018 - December 2025

Sizes

XS - 2XL

RRP 47 CH



AA0737-010

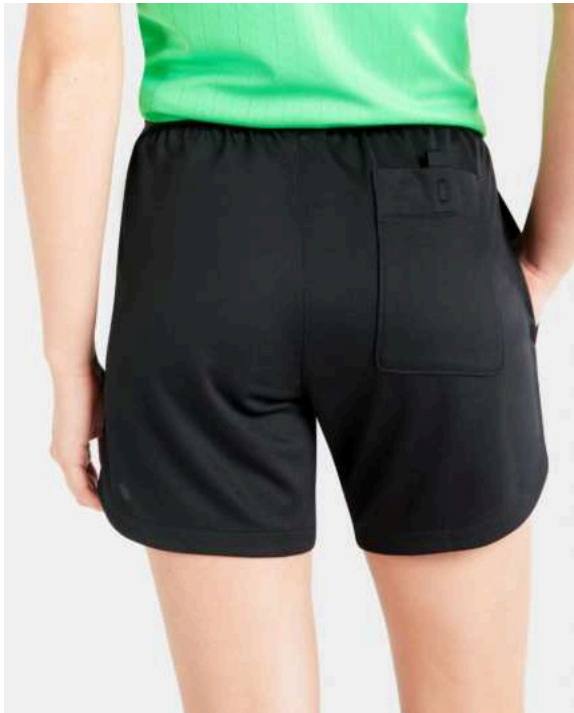
Features

- Die Nike VaporKnit-Technologie kombiniert angenehm kühlen und leichten Tragekomfort, weniger Anhaften auf der Haut und eine präzise Passform.
- Schnell trocknendes Stretchmaterial für flexiblen Tragekomfort.
- Die anliegende Passform sorgt für Geschwindigkeit und ein optimales Tragegefühl.
- Dieses Produkt besteht aus mindestens 50 % recycelten Polyesterfasern





DH8269



Dri-Fit Women's Referee Shorts

Lifecycle

April 2022 - December 2025

Sizes

XS - XL

RRP 47 CH



DH8269-010

Features

- Schweißableitendes Material sorgt für kühlen Tragekomfort während der gesamten 90 Minuten.
- Die Dri-FIT-Technologie leitet Schweiß von der Haut ab, wo er schnell verdunstet, und ermöglicht so trockenen Tragekomfort.
- Seitentaschen und eine Tasche hinten eignen sich zur Aufbewahrung deiner Essentials
- Verstellbarer Kordelzug für eine personalisierte Passform.
- Schmale Passform für ein körpernahes Tragegefühl
- Maschinenwäsche
- This product is made with at least 75% recycled polyester fibers





And when the final whistle blows, when the boots are muddy and the legs are heavy, you carry home something no trophy could match. Tomorrow's alarm clock might wake you for work or school, but in your mind, you're silently preparing for next weekend's kickoff. Because the grass-stained memories and shared celebrations are what make every weekend warrior's story unforgettable.